

PENKO Engineering B.V.

Your Partner for Fully Engineered Factory Solutions



How to...
Use and setup the web browser with the
SGM720 or SGM820



PENKO

an ETC Company

Table of Contents

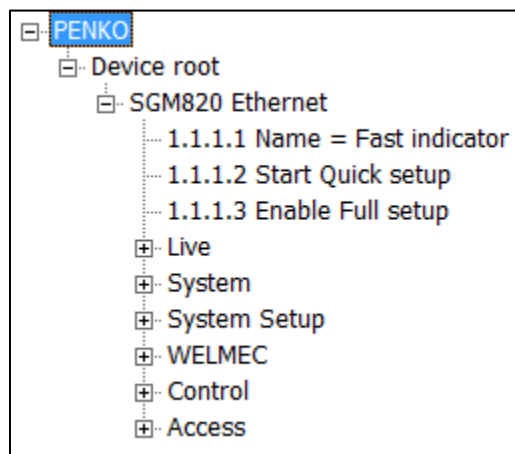
Introduction.....	3
1 Device setup	4
1.1 SGM720/820	4
1.1.1 Device configuration	4
1.1.2 Manage configuration	5

Introduction

The PENKO Web Interface makes it possible to configure all device settings via a web browser. When available in the same network, this can even be done with a mobile device. The PENKO SGM720/820 (from version V1.4.0.9.0.2) and PENKO 1020 (from version V1.3.7.9.0.7) devices are equipped with this feature.

The web interface uses the PDI structure of the device, the same structure that is used in the PENKO software tools PDI Client and Pi Mach II.

PENKO Pi Mach II Manage:



PENKO Web Interface:

System Setup PDI

Back

Path: 1.1.1
PENKO.Device root.SGM820 Ethernet

Live System System Setup WELMEC Control Access

Name Fast indicator

Start Quick setup

Enable Full setup

1 Device setup

In order to communicate with the device over Ethernet, the network settings must be set. The PENKO device and computer or handheld must be in the same network.

Example:

Computer	IP address: 10.1.2.1	Subnet Mask: 255.255.255.0
----------	----------------------	----------------------------

PENKO device	IP address: 10.1.2.66	Subnet Mask: 255.255.255.0
--------------	-----------------------	----------------------------

In this example the first 3 bytes of the IP addresses must be the same according to the subnet mask.

1.1 SGM720/820

Configure the SGM720/820 on the device or via Pi Mach II.

1.1.1 Device configuration



Note that the buttons have different functions for short press and long press.

Press button 3 long to enter the configuration menu:



Press button 1 short a number of times until the Ethernet settings appear:



Press button 2 short to enter the settings:



Press button 2 short to enter the settings. The first byte appears in the display:



- Use button 1 short to increase the blinking digit
- Use button 1 long to decrease the blinking digit
- Use button 2 short to move to the next digit
- Use button 3 long to confirm
- Or, use button 3 short to escape

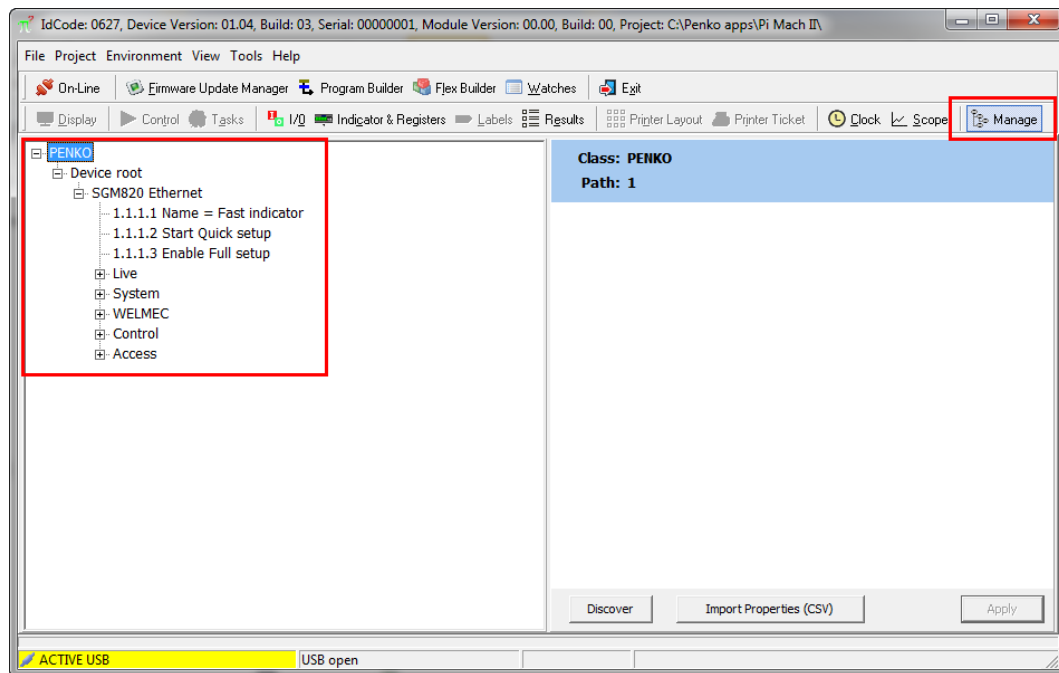
Now the second byte (Adr 2) appears in the display. Repeat these steps to set the all bytes for the IP address, Subnet mask and Gateway. The last option is enable or disable the DHCP function. For a basic configuration, the Gateway address can be set to 0.0.0.0, and DHCP can be set off.

IP Address				Subnet Mask				Gateway Address				DHCP
Adr 1	Adr 2	Adr 3	Adr 4	Sub 1	Sub 2	Sub 3	Sub 4	Gat 1	Gat 2	Gat 3	Gat 4	Dhcp

1.1.2 Manage configuration

Manage is available in PENKO Pi Mach II. This program can be downloaded from www.penko.com/software. This download also contains the user manual and the needed USB driver.

Connect the SGM720/820 to the computer with a USB A-B cable and start Pi Mach II. The connected device will be recognized and Pi Mach II will directly go to Manage:



PENKO How to...

Use and setup the web browser with the SGM720 or SGM820

The tree on the left side represents the configuration of the device. Click the device and in the right screen click Enable Full setup:

The screenshot shows the PENKO configuration interface. On the left, a tree view shows the device configuration. The 'SGM820 Ethernet' node is selected and highlighted with a red box. Below it, three sub-nodes are listed: '1.1.1.1 Name = Fast indicator', '1.1.1.2 Start Quick setup', and '1.1.1.3 Enable Full setup'. On the right, the configuration details for the selected node are shown. The class is 'PENKO.Device root.SGM820 Ethernet' and the path is '1.1.1'. The 'Name' field is set to 'Fast indicator'. There are two buttons: 'Start Quick setup' and 'Enable Full setup', with the latter highlighted by a red box. At the bottom, there are three buttons: 'Discover', 'Import Properties (CSV)', and 'Apply'.

Go to System Setup - Communication - Ethernet:

The screenshot shows the PENKO configuration interface. On the left, a tree view shows the device configuration. The 'Ethernet' node under 'System Setup - Communication' is selected and highlighted with a red box. On the right, the configuration details for the selected node are shown. The class is 'PENKO.Device root.SGM820 Ethernet.System Setup.Co' and the path is '1.1.1.3.3.2'. The 'MAC' field is set to '1E:30:6C:A2:45:5E'. The 'Name' field is empty. The 'Address' field is set to '10 . 1 . 2 . 66'. The 'Mask' field is set to '255 . 255 . 255 . 0'. The 'Gateway' field is set to '0 . 0 . 0 . 0'. The 'DHCP' field is set to 'DISABLE'. At the bottom, there are three buttons: 'Discover', 'Import Properties (CSV)', and 'Apply'.

In the right screen all Ethernet settings can be made. Confirm changes with Enter or the Apply button.



About PENKO

Our design expertise include systems for manufacturing plants, bulk weighing, check weighing, force measuring and process control. For over 35 years, PENKO Engineering B.V. has been at the forefront of development and production of high-accuracy, high-speed weighing systems and our solutions continue to help cut costs, increase ROI and drive profits for some of the largest global brands, such as Cargill, Sara Lee, Heinz, Kraft Foods and Unilever to name but a few.

Whether you are looking for a simple stand-alone weighing system or a high-speed weighing and dosing controller for a complex automated production line, PENKO has a comprehensive range of standard solutions you can rely on.

Certifications

PENKO sets high standards for its products and product performance which are tested, certified and approved by independent expert and government organizations to ensure they meet – and even – exceed metrology industry guidelines. A library of testing certificates is available for reference on:

http://penko.com/nl/publications_certificates.html



PENKO Professional Services

PENKO is committed to ensuring every system is installed, tested, programmed, commissioned and operational to client specifications. Our engineers, at our weighing center in Ede, Netherlands, as well as our distributors around the world, strive to solve most weighing-system issues within the same day. On a monthly basis PENKO offers free training classes to anyone interested in exploring modern, high-speed weighing instruments and solutions. A schedule of training sessions is found on: www.penko.com/training

PENKO Alliances

PENKO's worldwide network: Australia, Belgium, Brazil, China, Denmark, Germany, Egypt, Finland, France, India, Italy, Netherlands, Norway, Poland, Portugal, Slovakia, Spain, Syria, Turkey, United Kingdom, South Africa, Slovakia Sweden, Switzerland and Singapore. A complete overview you will find on: www.penko.com/dealers

