

PENKO Engineering B.V.

Your Partner for Fully Engineered Factory Solutions



How to...
Install a custom program



PENKO

an ETC Company

Table of Contents

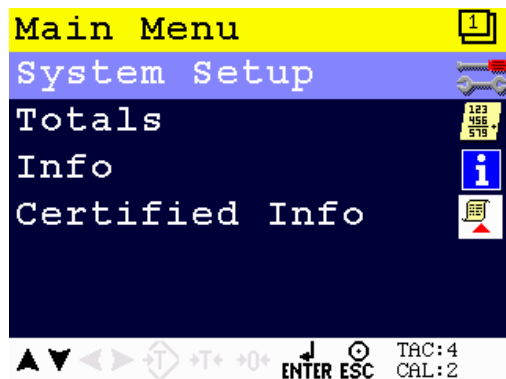
Update the firmware via Ethernet	3
Install the software.....	8

Update the firmware via Ethernet

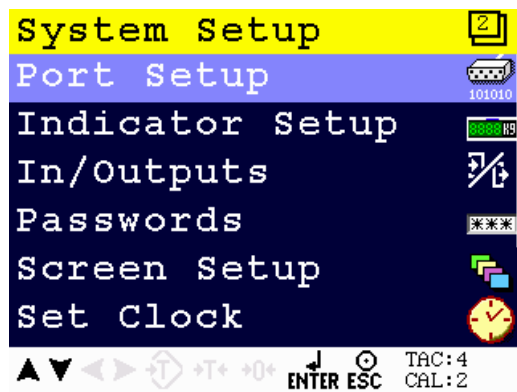
Connect the 1020 directly to the PC using a crossover Ethernet cable. Or connect the 1020 to the PC with a switch.

First of all you need to know the IP address of the 1020. Hold the “**Enter**” key for more than 2 seconds.

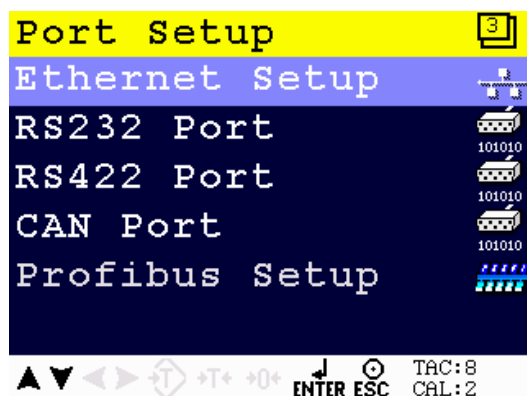
Select **System Setup** and press the **Enter** key.



Select **Port Setup** and press the **Enter** key.



Select **Ethernet Setup** and press the **Enter** key.

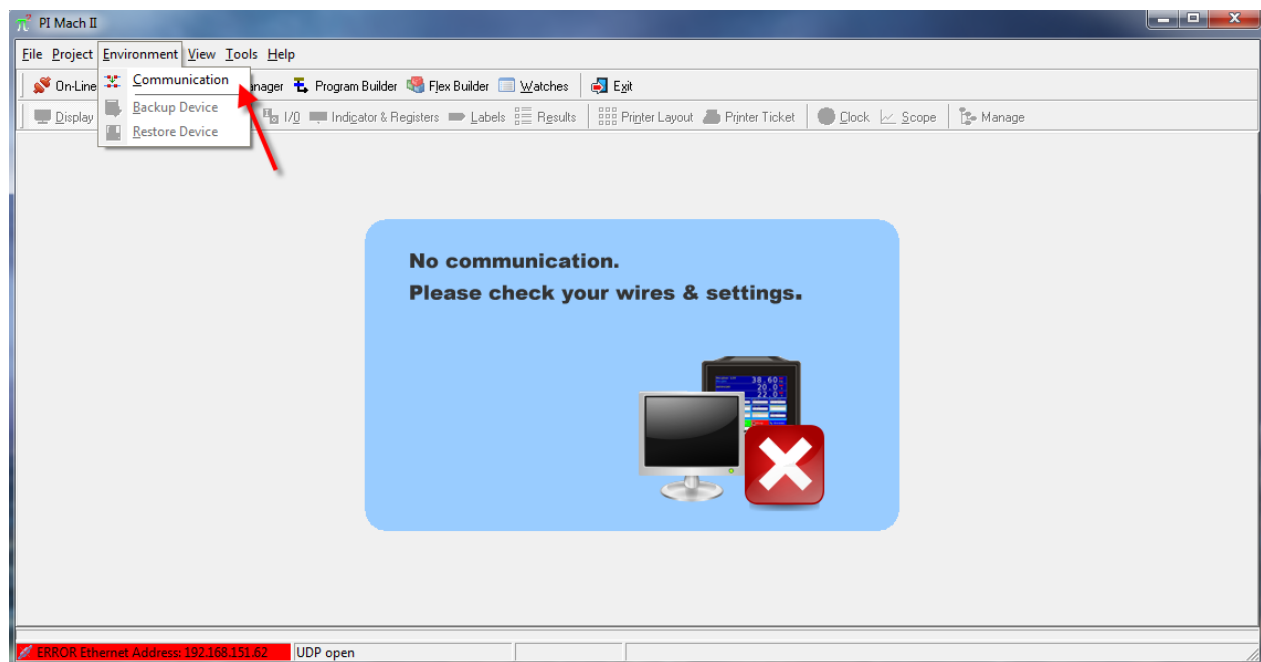


PENKO How to...
Install a custom program

Now you can see the IP address.

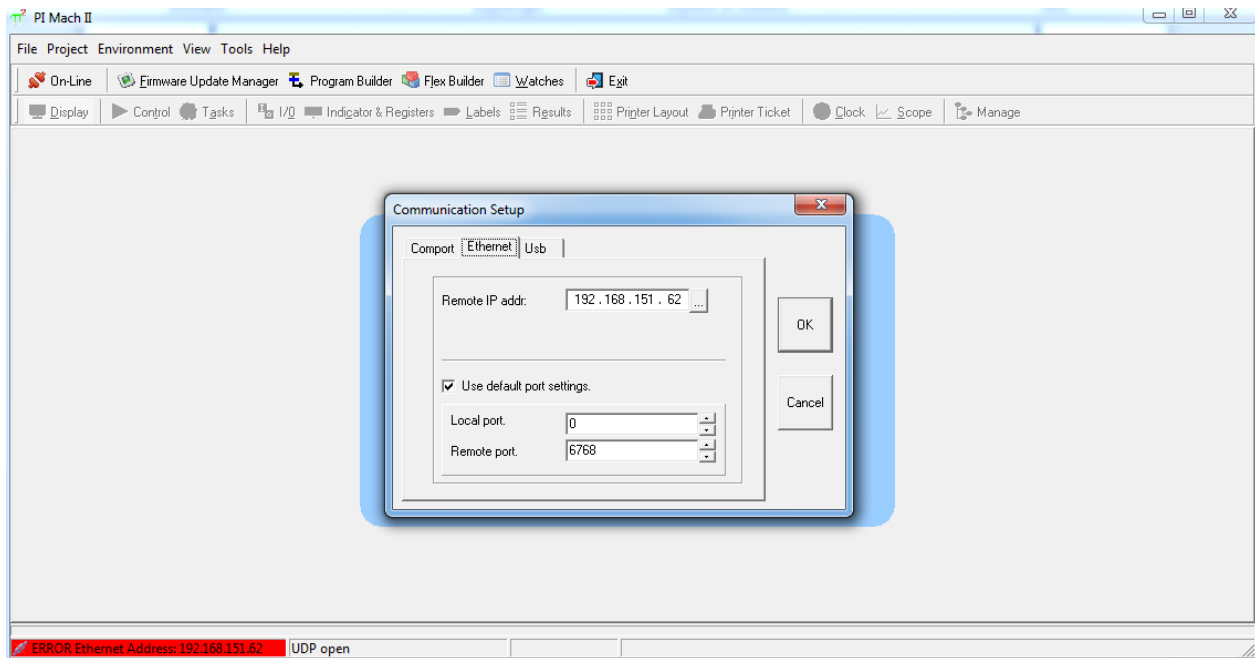
```
Ethernet Setup
IP Number
192.168.151.062
Subnet Mask
255.255.255.000
Gateway
000.000.000.000
▲ ▼ ◀ ▶ ↻ +T+ +0+ ENTER ESC TAC:4 CAL:2
```

Open Pi Mach II and go to **Environment** and click on **Communication**.

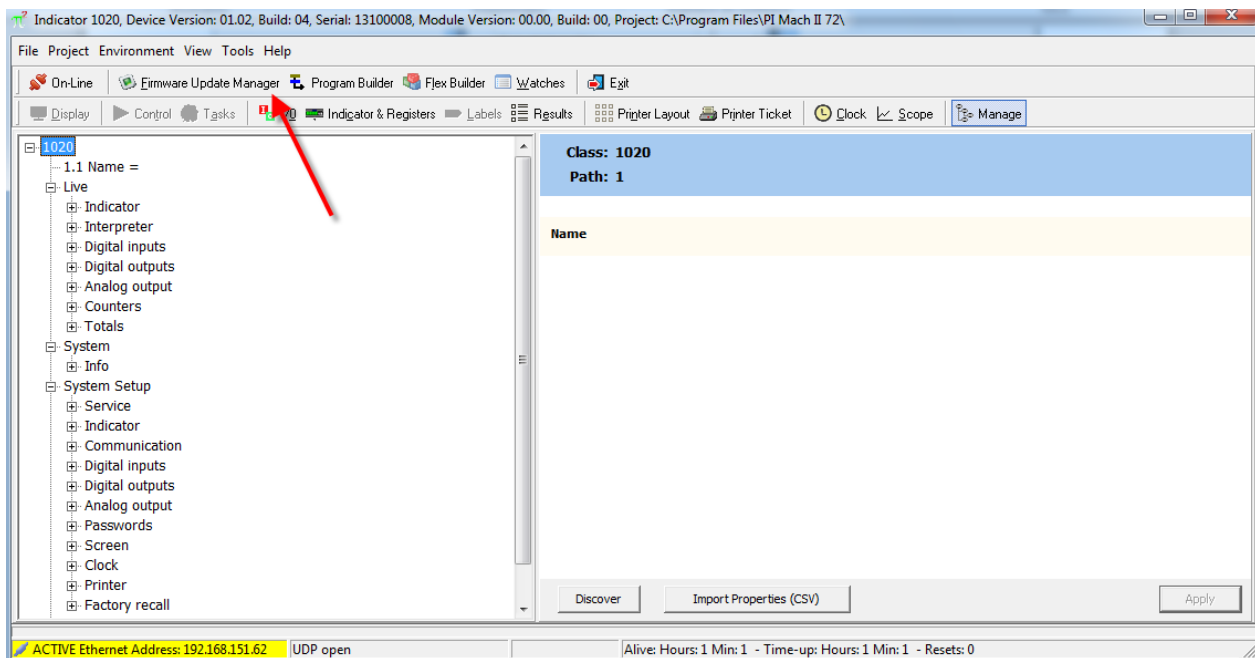


PENKO How to... Install a custom program

A popup screen will appear, click on the tab “**Ethernet**” and fill in the IP address from the 1020. Now click on “**OK**”.

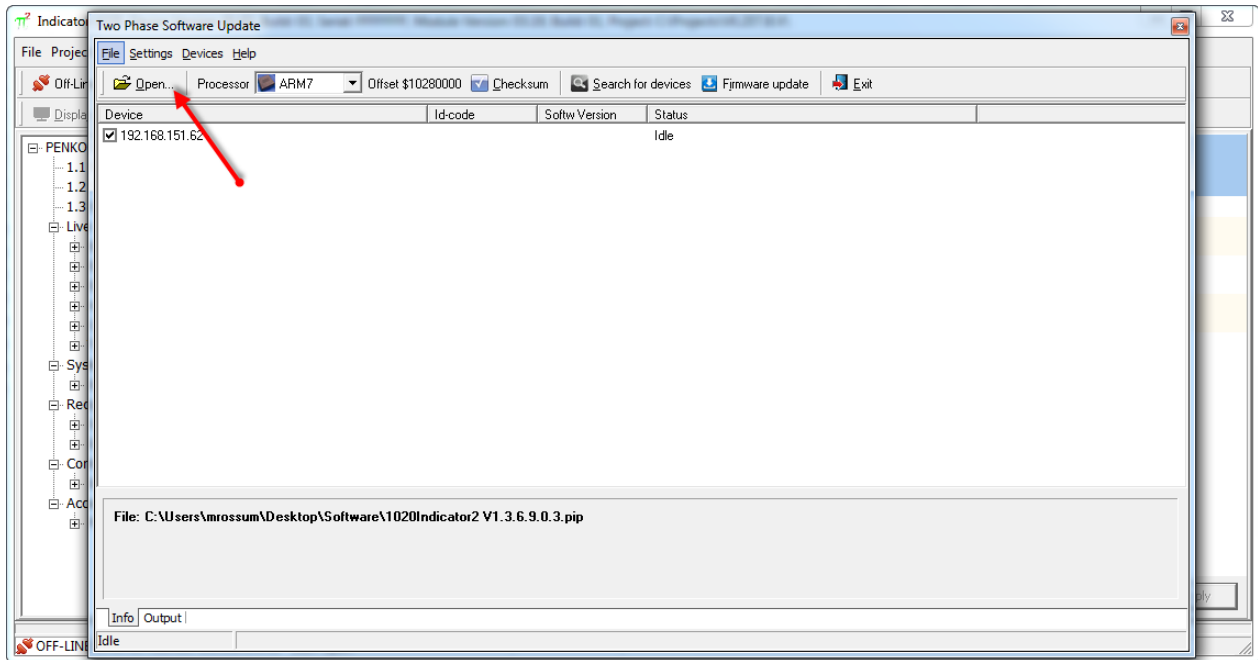


Click on **Firmware Update Manager**

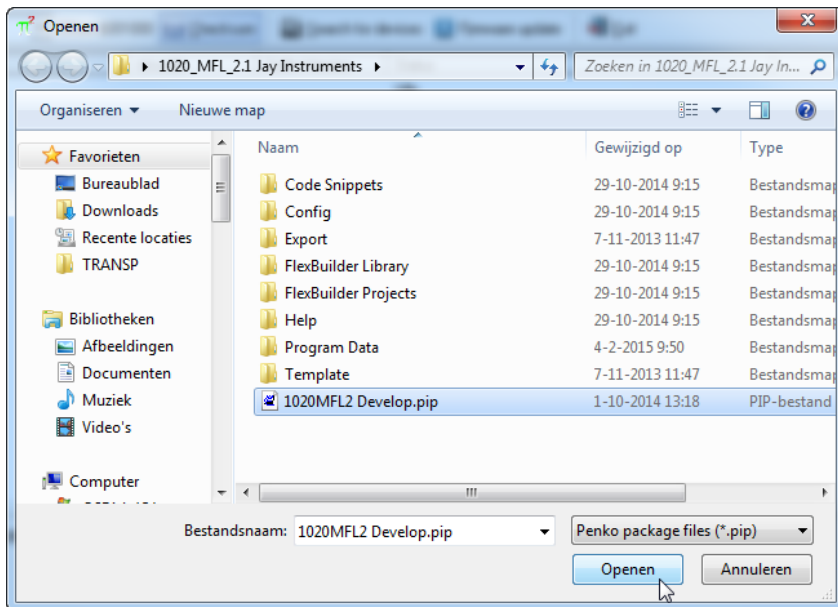


PENKO How to...
Install a custom program

Click on **Open**.

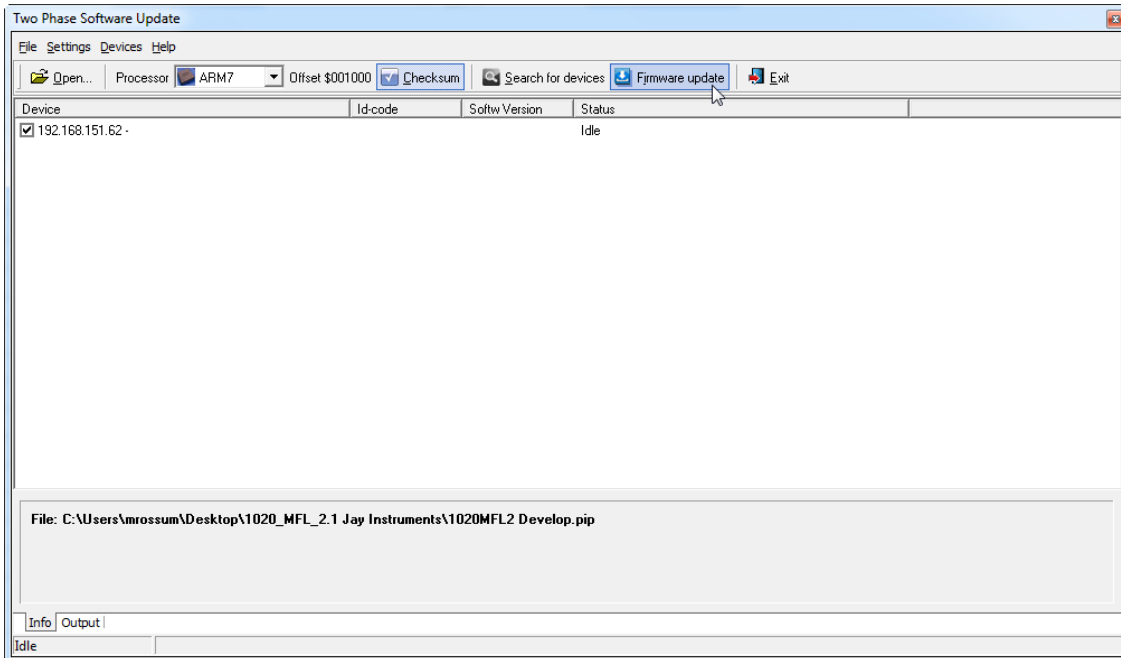


Select the file you want to use and click on **Open**.

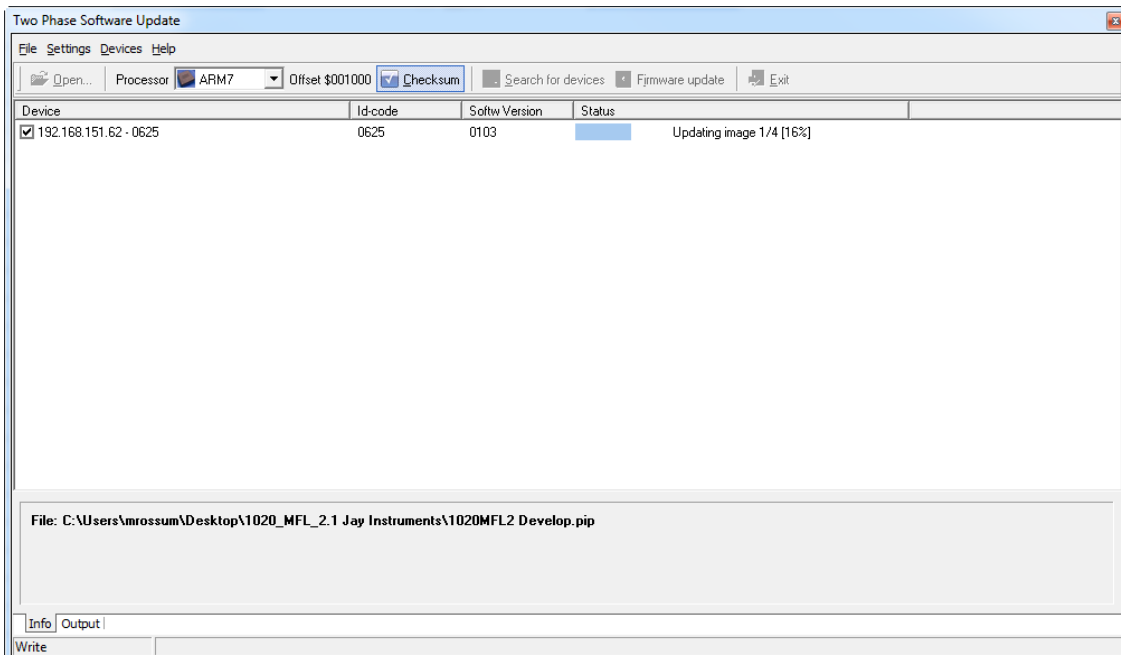


PENKO How to...
Install a custom program

Now click on **Firmware Update**.



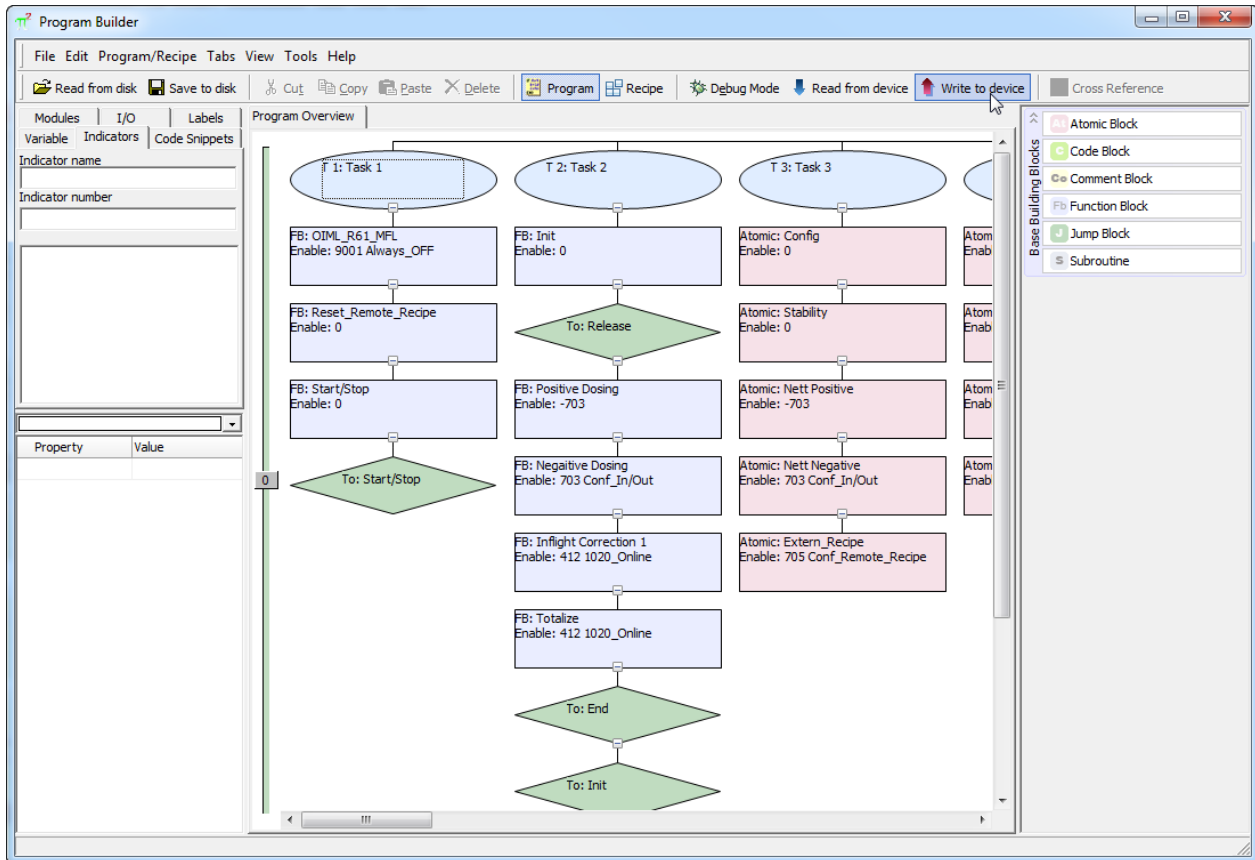
The Update will start.



After this the update is complete and the 1020 will reboot.

Install the software

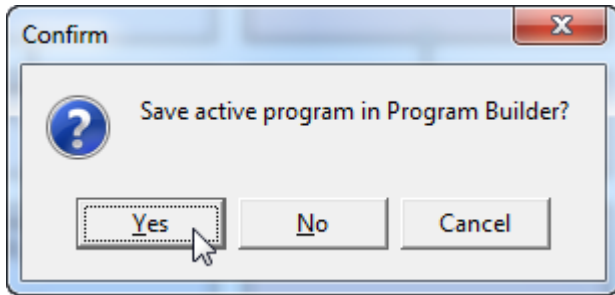
Open “Program Builder” in Pi Mach II, click on “Write to device”.



The program will now write to the 1020.

Number of tasks:	4
Busy with task:	4
Module count:	74
Status:	Writing program to device

You can now exit the “Program Builder”, click Yes when the program asks to save the active program



Now reboot the 1020 manually. When the 1020 is rebooted the device is ready for use.



About PENKO

Our design expertise include systems for manufacturing plants, bulk weighing, check weighing, force measuring and process control. For over 35 years, PENKO Engineering B.V. has been at the forefront of development and production of high-accuracy, high-speed weighing systems and our solutions continue to help cut costs, increase ROI and drive profits for some of the largest global brands, such as Cargill, Sara Lee, Heinz, Kraft Foods and Unilever to name but a few.

Whether you are looking for a simple stand-alone weighing system or a high-speed weighing and dosing controller for a complex automated production line, PENKO has a comprehensive range of standard solutions you can rely on.

Certifications

PENKO sets high standards for its products and product performance which are tested, certified and approved by independent expert and government organizations to ensure they meet – and even – exceed metrology industry guidelines. A library of testing certificates is available for reference on:

http://penko.com/nl/publications_certificates.html



PENKO Professional Services

PENKO is committed to ensuring every system is installed, tested, programmed, commissioned and operational to client specifications. Our engineers, at our weighing center in Ede, Netherlands, as well as our distributors around the world, strive to solve most weighing-system issues within the same day. On a monthly basis PENKO offers free training classes to anyone interested in exploring modern, high-speed weighing instruments and solutions. A schedule of training sessions is found on: www.penko.com/training

PENKO Alliances

PENKO's worldwide network: Australia, Belgium, Brazil, China, Denmark, Germany, Egypt, Finland, France, India, Italy, Netherlands, Norway, Poland, Portugal, Slovakia, Spain, Syria, Turkey, United Kingdom, South Africa, Slovakia Sweden, Switzerland and Singapore.

A complete overview you will find on: www.penko.com/dealers

