

# PENKO Engineering B.V.

Your Partner for Fully Engineered Factory Solutions



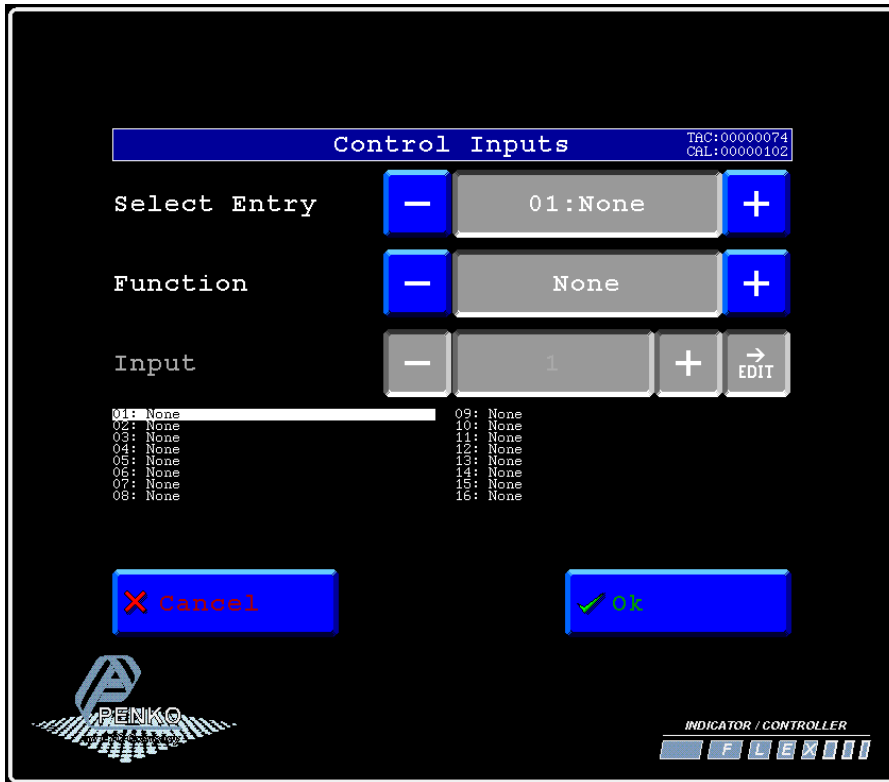
How to...  
Set up the FLEX 2100, FLEX or FLEX 2ch. –  
4ch. inputs



**PENKO**

an ETC Company

Go to **Menu** → **System Setup** → **In/Outputs** → **Inputs**. Here you can set the functions for the inputs.



**Select Entry:** choose an entry between 1 and 16

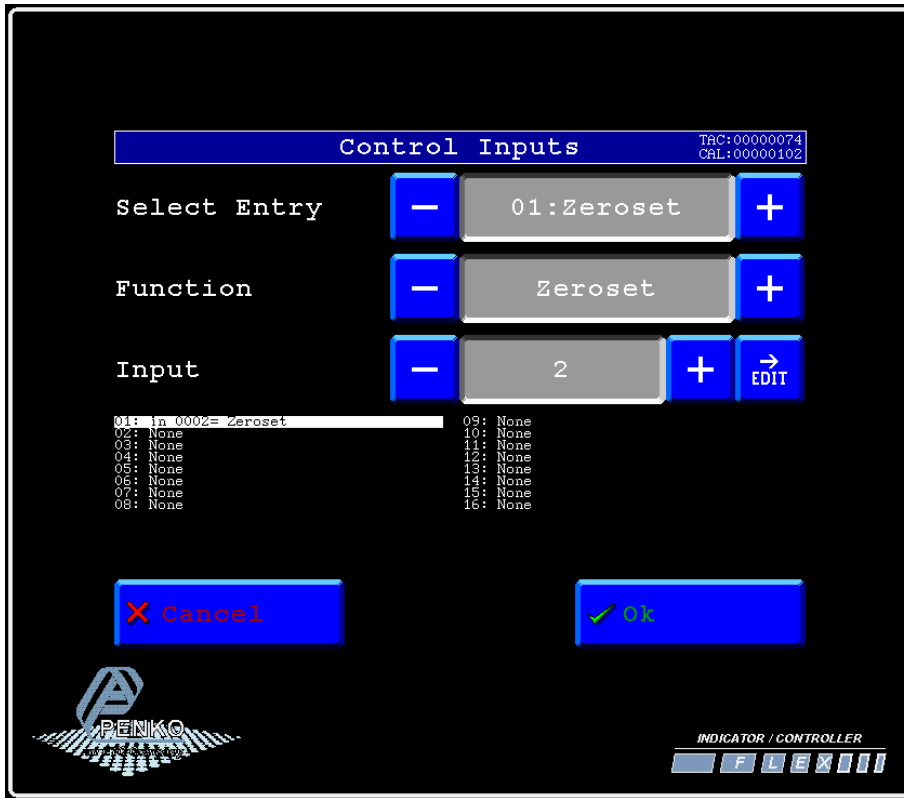
**Function:** choose the function you want for the input.

Function	Description
None	The input has no function
Zero set	Set the weight value to zero
Zero reset	Resets the weight value to the original value
Tare set	Set Tare
Tare reset	Reset Tare
Print	Print ticket
Reset peak	Reset the highest weight value
Reset Valley	Reset the lowest weight value
Next screen	Go to next screen
Screen Lock	The touch screen will not react
Start	Start program
Stop	Stop program
Wait	Pause program

**Input:** select which input you want to connect to the function.

PENKO How to...  
Set up the FLEX 2100, FLEX or FLEX 2ch. – 4ch.

In the example below the first entry is Zero set and it is activated by input 2.



Press **OK** to save the settings and press **Home** to return to the main screen.



## About PENKO

Our design expertise include systems for manufacturing plants, bulk weighing, check weighing, force measuring and process control. For over 35 years, PENKO Engineering B.V. has been at the forefront of development and production of high-accuracy, high-speed weighing systems and our solutions continue to help cut costs, increase ROI and drive profits for some of the largest global brands, such as Cargill, Sara Lee, Heinz, Kraft Foods and Unilever to name but a few.

Whether you are looking for a simple stand-alone weighing system or a high-speed weighing and dosing controller for a complex automated production line, PENKO has a comprehensive range of standard solutions you can rely on.

## Certifications

PENKO sets high standards for its products and product performance which are tested, certified and approved by independent expert and government organizations to ensure they meet – and even – exceed metrology industry guidelines. A library of testing certificates is available for reference on:

[http://penko.com/nl/publications\\_certificates.html](http://penko.com/nl/publications_certificates.html)



## PENKO Professional Services

PENKO is committed to ensuring every system is installed, tested, programmed, commissioned and operational to client specifications. Our engineers, at our weighing center in Ede, Netherlands, as well as our distributors around the world, strive to solve most weighing-system issues within the same day. On a monthly basis PENKO offers free training classes to anyone interested in exploring modern, high-speed weighing instruments and solutions. A schedule of training sessions is found on: [www.penko.com/training](http://www.penko.com/training)

## PENKO Alliances

PENKO's worldwide network: Australia, Belgium, Brazil, China, Denmark, Germany, Egypt, Finland, France, India, Italy, Netherlands, Norway, Poland, Portugal, Slovakia, Spain, Syria, Turkey, United Kingdom, South Africa, Slovakia Sweden, Switzerland and Singapore. A complete overview you will find on: [www.penko.com/dealers](http://www.penko.com/dealers)

