

PENKO Engineering B.V.

Your Partner for Fully Engineered Factory Solutions



How to... Install and set up PENKO Data Reporter



PENKO

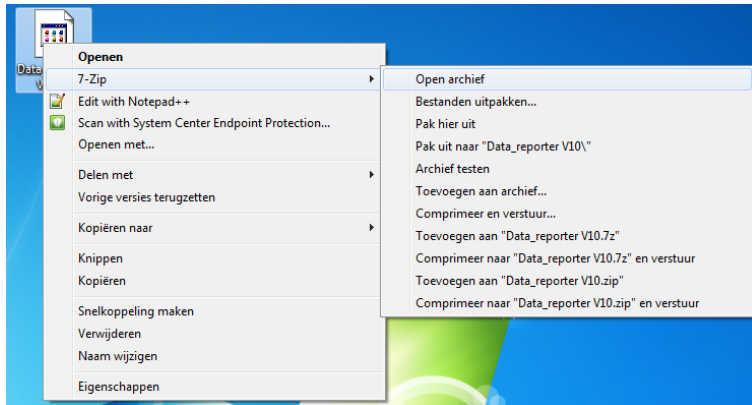
an ETC Company

Table of Contents

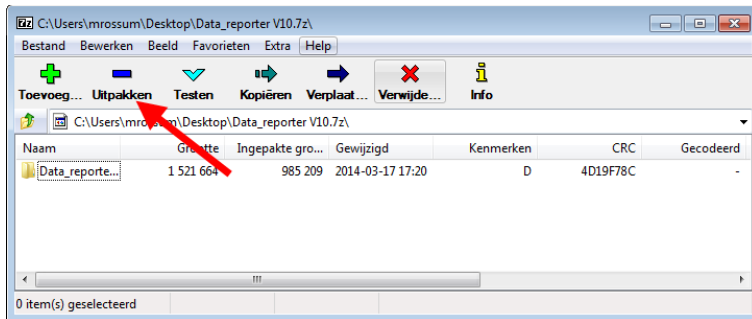
Unpack the Data Reporter.....	3
Installing the software.....	4
Setup the Data Reporter	7
Report setup.....	7
Export save file settings (PRS file)	11
Import save file settings (PRS file).....	12
Com. Setup	13
Import settings (PST file)	16
Export Settings (PST file)	18
Start communication.....	20

Unpack the Data Reporter

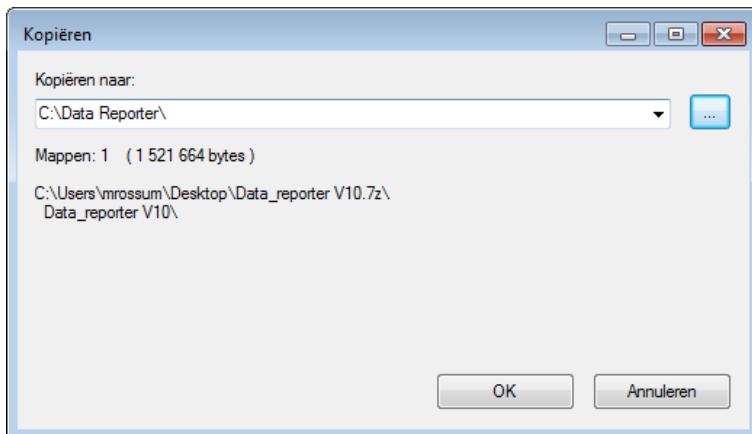
Right click on the **Data Reporter** file, choose **7-zip** and choose **Open archive**.



Click on **Extract**.





Select a folder to extract the files and click on **OK**.



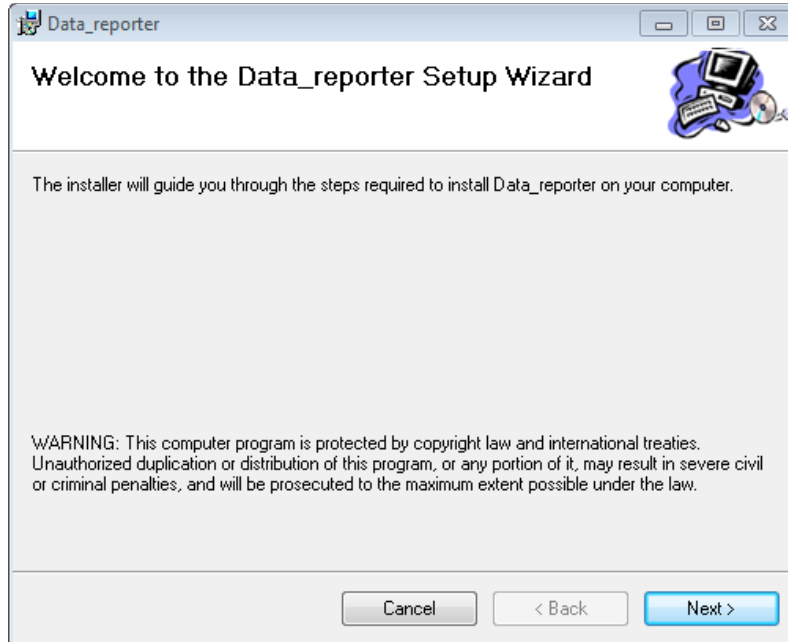
The files are now extracted into the selected folder.

Installing the software

Go to the folder and open **setup.exe**.

 Data_reporter.msi	17-3-2014 17:19	Windows Installer-p...	1.030 kB
 setup.exe	17-3-2014 17:19	Toepassing	456 kB

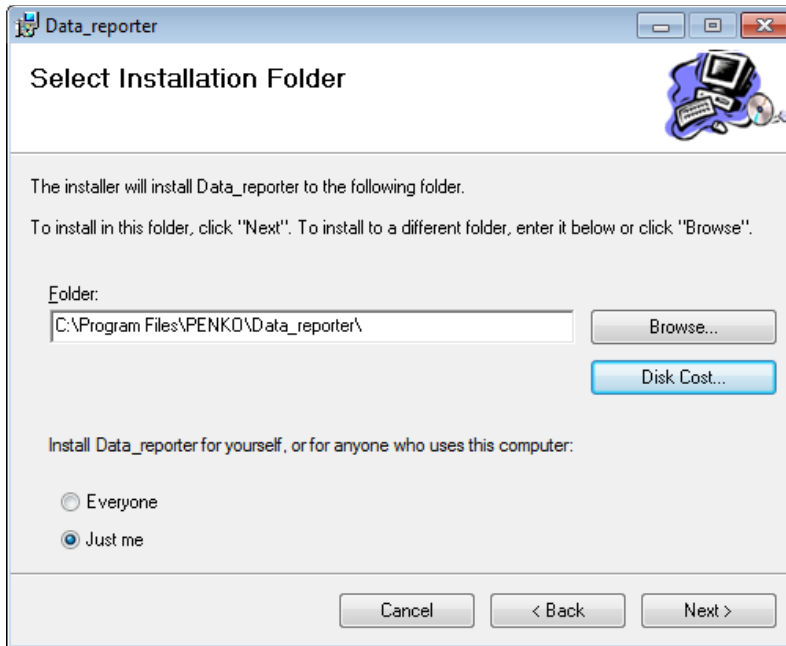
Click on **Next**.



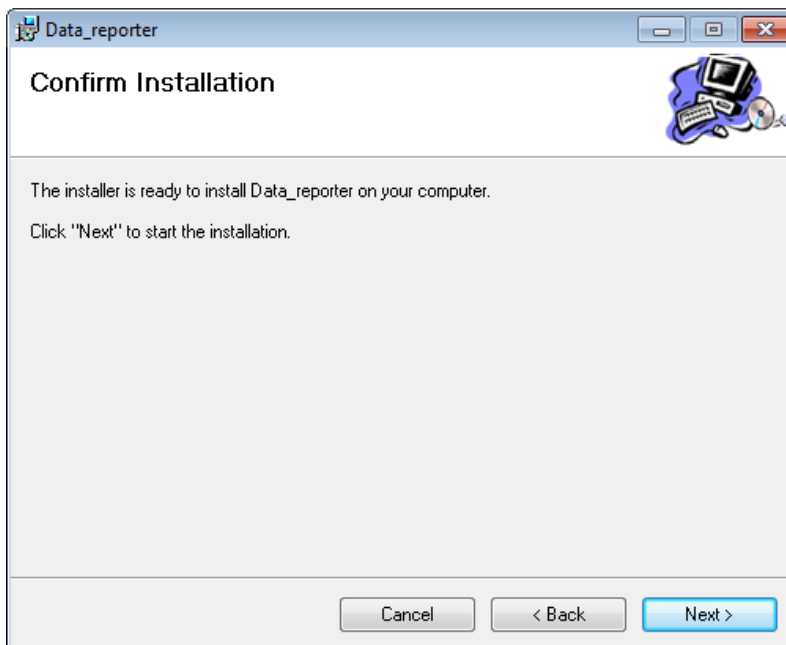
PENKO How to...
Install and set up PENKO Data Reporter

Click on **Browse** if you want the PENKO Data Reporter installed in another folder than selected. Click on **Disk Cost** to see the amount of free disk space. Choose if Data Reporter is available for everyone that uses the PC or only available for this account.

Click **Next**.

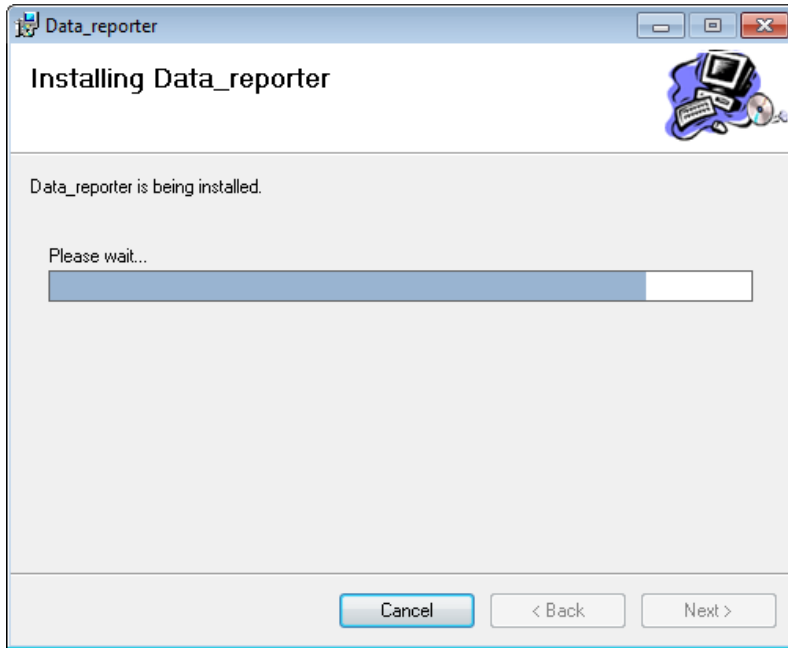


Click **Next** to start the installation.

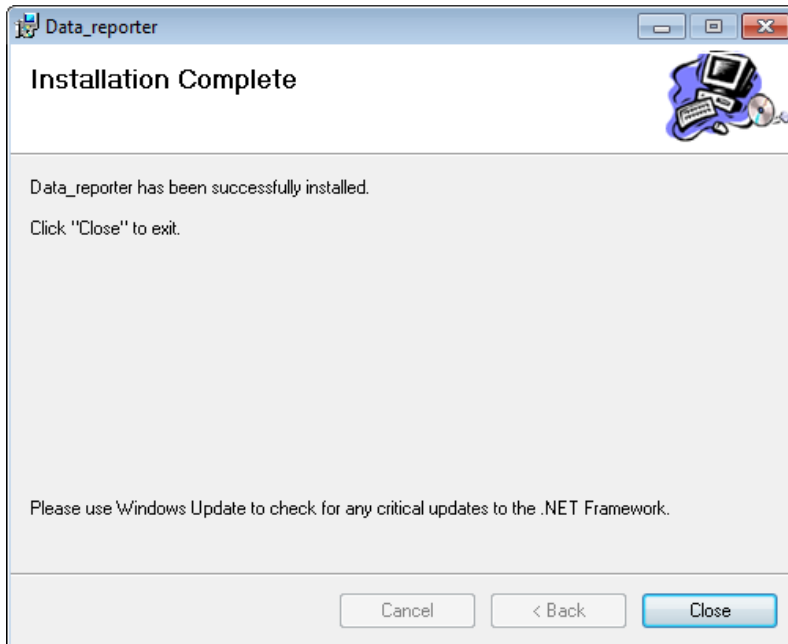


PENKO How to...
Install and set up PENKO Data Reporter

The Data Reporter will begin to install.



Click **Close** to exit the installation wizard.



Setup the Data Reporter

Report setup

Go to the folder where the Data Reporter is installed and open **PENKO_REPORT.exe**.

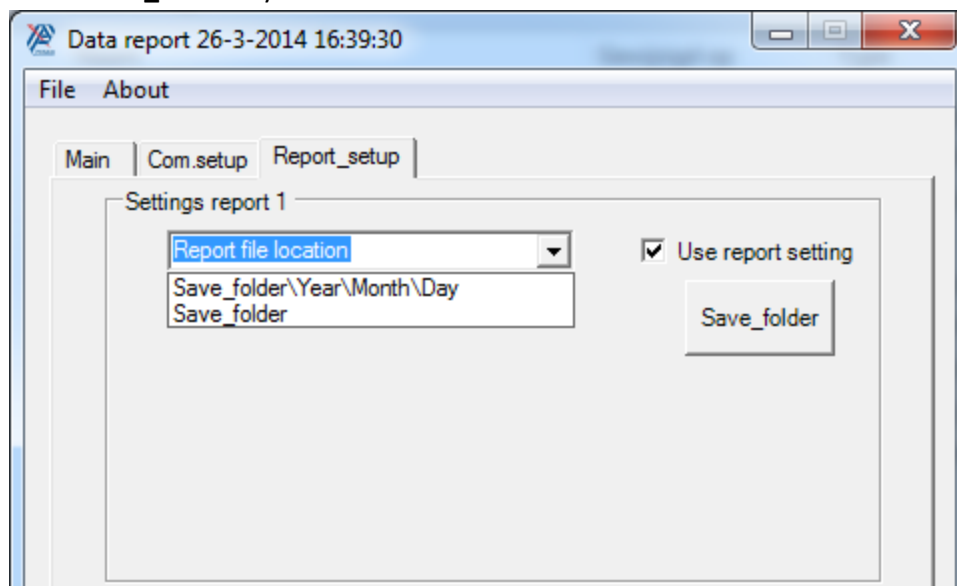
Naam	Gewijzigd op	Type	Grootte
AxInterop.MSChart20Lib.dll	29-9-2010 12:50	Toepassingsuitbre...	60 kB
GvDo.ini	12-2-2014 12:19	Configuratie-inste...	1 kB
Interop.MSChart20Lib.dll	11-2-2014 12:28	Toepassingsuitbre...	140 kB
logo pen.ico	21-5-2012 21:16	Pictogram	5 kB
Microsoft.Vbe.Interop.dll	17-6-2010 18:37	Toepassingsuitbre...	62 kB
MSCHRT20.OCX	7-1-2002 15:14	ActiveX-besturing...	986 kB
office.dll	17-6-2010 18:37	Toepassingsuitbre...	438 kB
PENKO_REPORT.exe	21-2-2014 15:56	Toepassing	202 kB
PENKO_REPORT.exe.config	21-2-2014 15:56	XML Configuratio...	22 kB

Go to the tab **Report_setup**. Check the box **Use report setting**. Now you can choose between **Save_folder\Year\Month\Day** or **Save_folder**.

Select **Save_folder\Year\Month\Day** if you want to have a new folder every day in Year\Month\Day format.



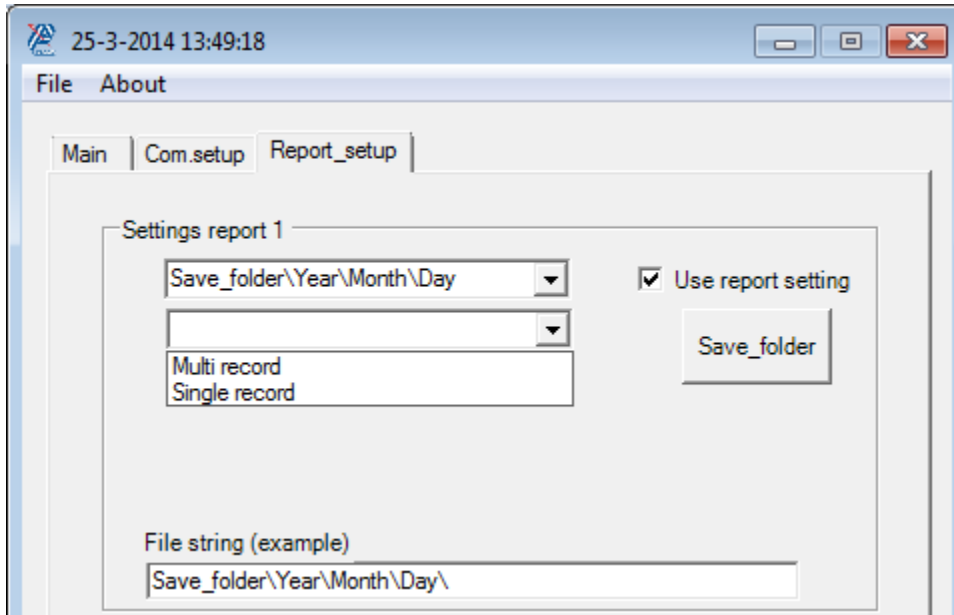
Select **Save_folder** if you want to have all the data in one folder.



Select if you want a **Multi record** or **Single record**.

Select **Multi record** if you want to have all the dosing data in one CSV file.

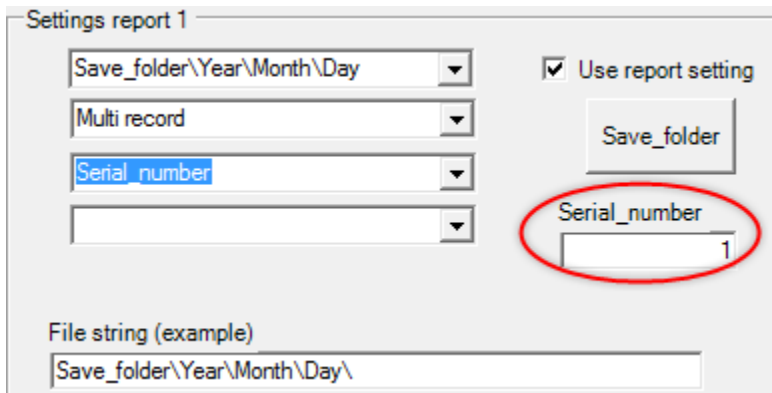
Select **Single record** if want to have separate CSV files for every dosing.



Select if you want **Hour_minute**, **Serial_number** or **None**. This option will be added to the filename

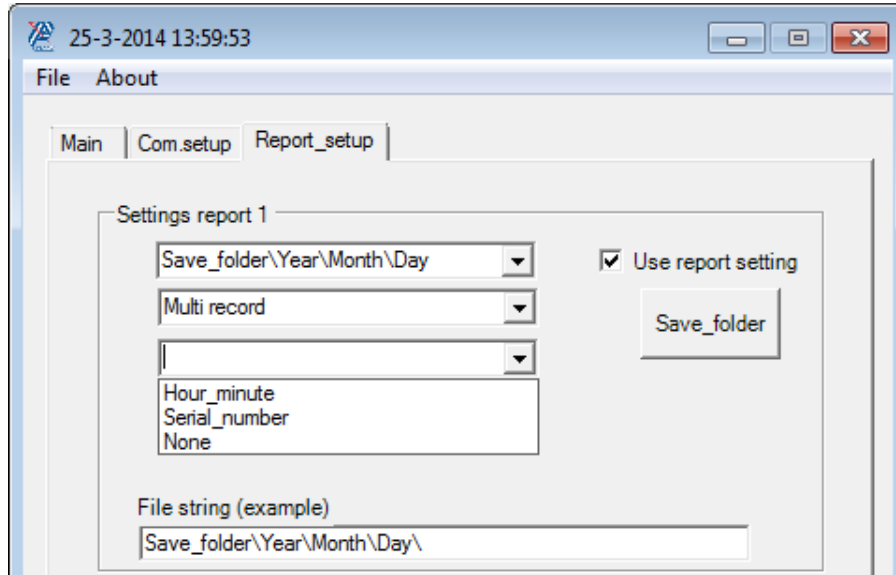
Select **Hour_minute** if you want the time added to the filename.

Select **Serial_number** if you want a serial number added to the filename. An input field will appear, where you can set the start of the serial number. Every CSV file will get a different serial number.



Select **None** if you do not want the time or a serial number added to the filename. Only available is Multi record is selected.

PENKO How to...
Install and set up PENKO Data Reporter



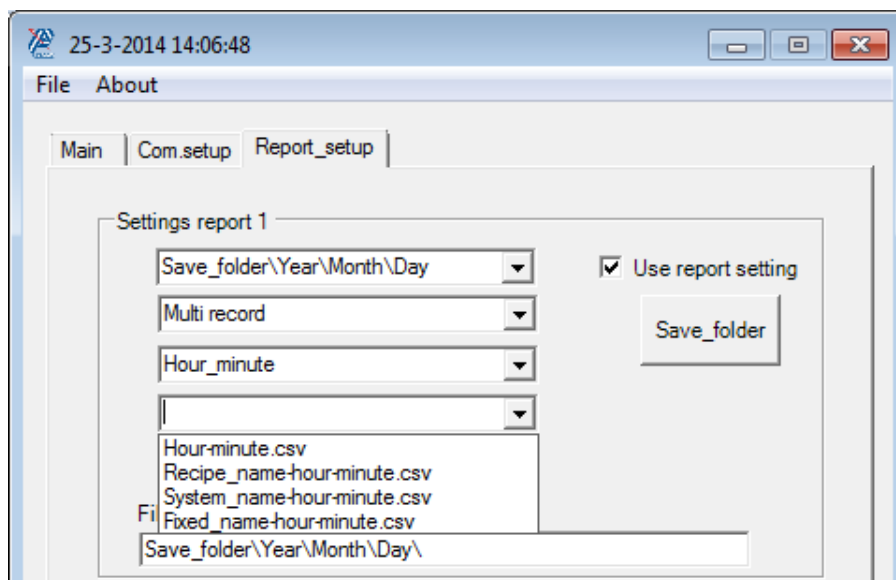
Select the file name of the CSV file.

Select **Hour-minute.CSV** if you want the file name set as time of the dosing.

Select **Recipe_name-hour-minute.CSV** if you want the filename set as Recipe name and the time of the dosing.

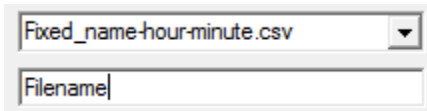
Select **System_name-hour-minute.CSV** if you want the filename set as System name and the time of the dosing.

Select **Fixed_nams-hour-minute.CSV** if you want a fixed filename and the time of the dosing



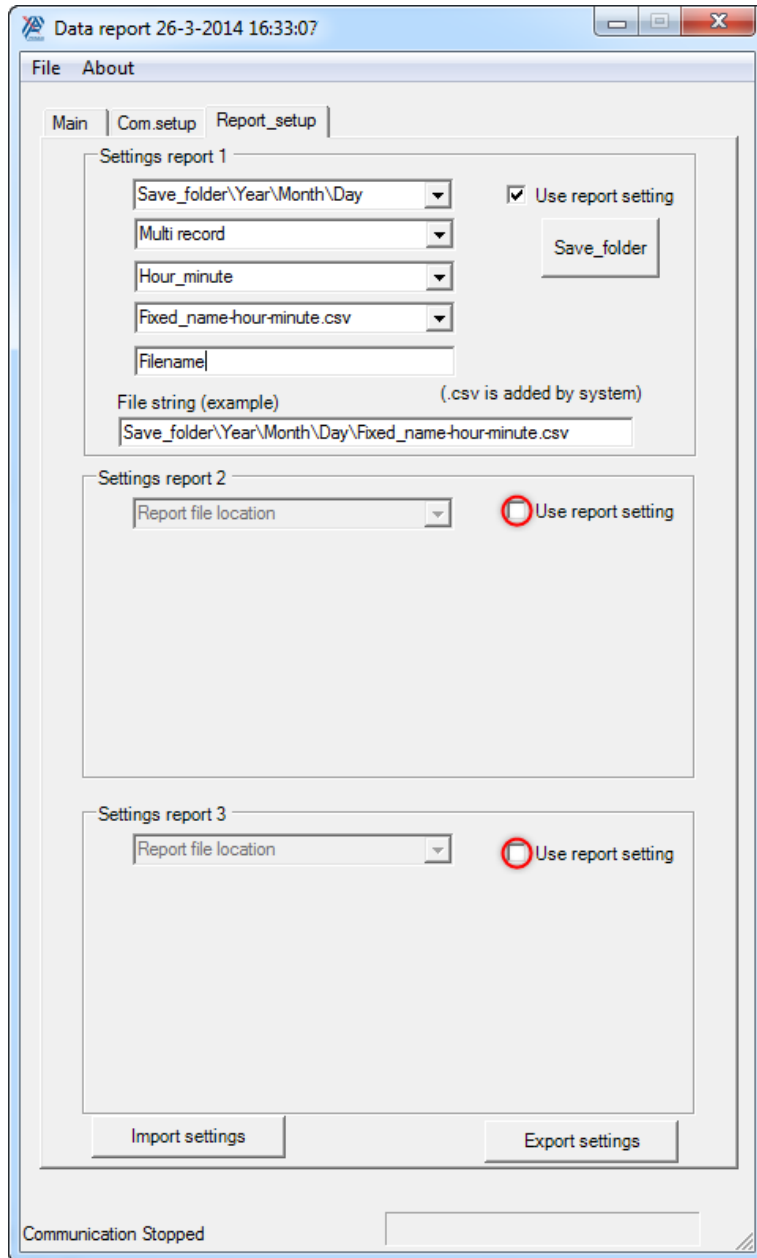
PENKO How to...
Install and set up PENKO Data Reporter

If you have chosen **Fixed_nams-hour-minute.CSV** an input field will appear were you can set a filename.
Data Reporter will automatically add the time to the filename



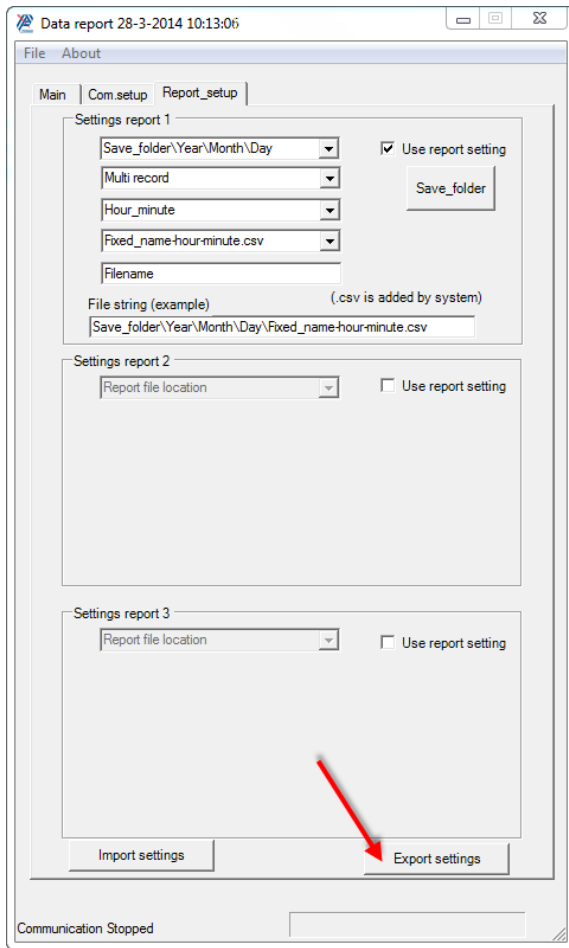
Click on **Save_folder** to select a folder where you want the data to be saved.

*It is possible to save the data up to 3 different ways, check the **Use report setting** boxes in the Data Reporter and set up the location and filenames.*

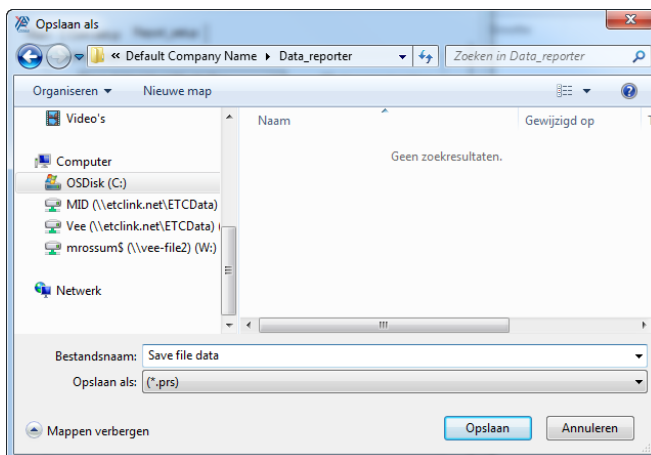


Export save file settings (PRS file)

To export the save file setting click on **Export settings**.

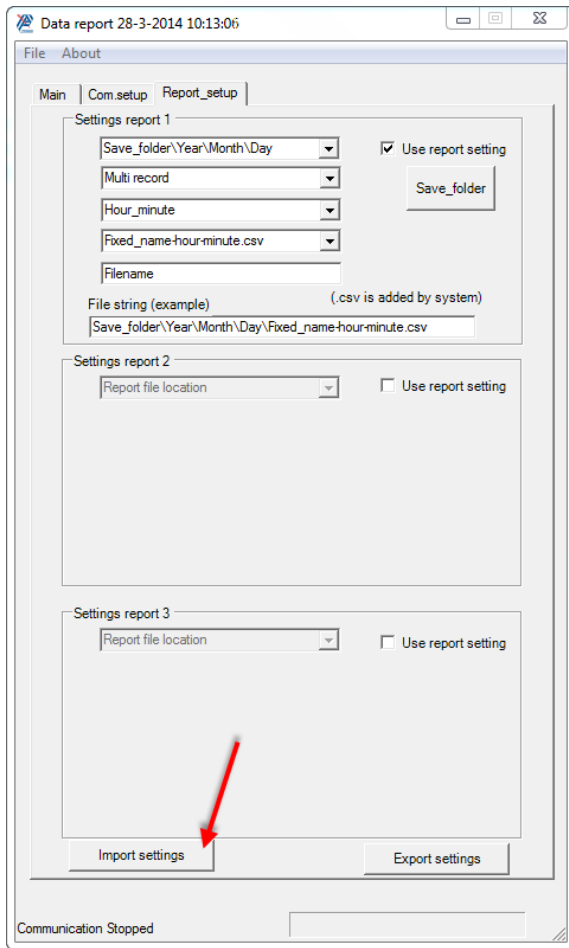


Select a folder where you want the file to be stored and give the file a name and click **Save**.

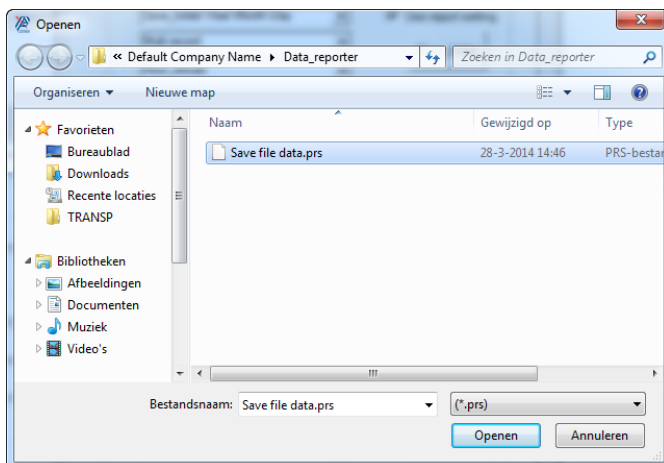


Import save file settings (PRS file)

To import the save file settings click on **Import settings**.



Go to the folder where the file is stored, select the file and click on **Open**.



Com. Setup

To set up the Communication port you must know the **IP address** and the **Local port** of the FLEX.

Go to the **Main Menu** → **System Setup** → **Port Setup** → **Ethernet Setup**.

The screenshot shows the 'Ethernet Setup' screen with the following fields and values:

Field	Value	Action
IP Number	192.168.151.061	EDIT
Subnet Mask	255.255.255.000	EDIT
Gateway	000.000.000.000	EDIT
Speed	Auto	Adjust (minus/plus)
Name	Penko	EDIT

Navigation buttons at the bottom: Cancel (red X), Next (blue >>), and Ok (green checkmark).

Press **Next** to see the **Local port**. Press **OK** and **Home** to return to the main screen.

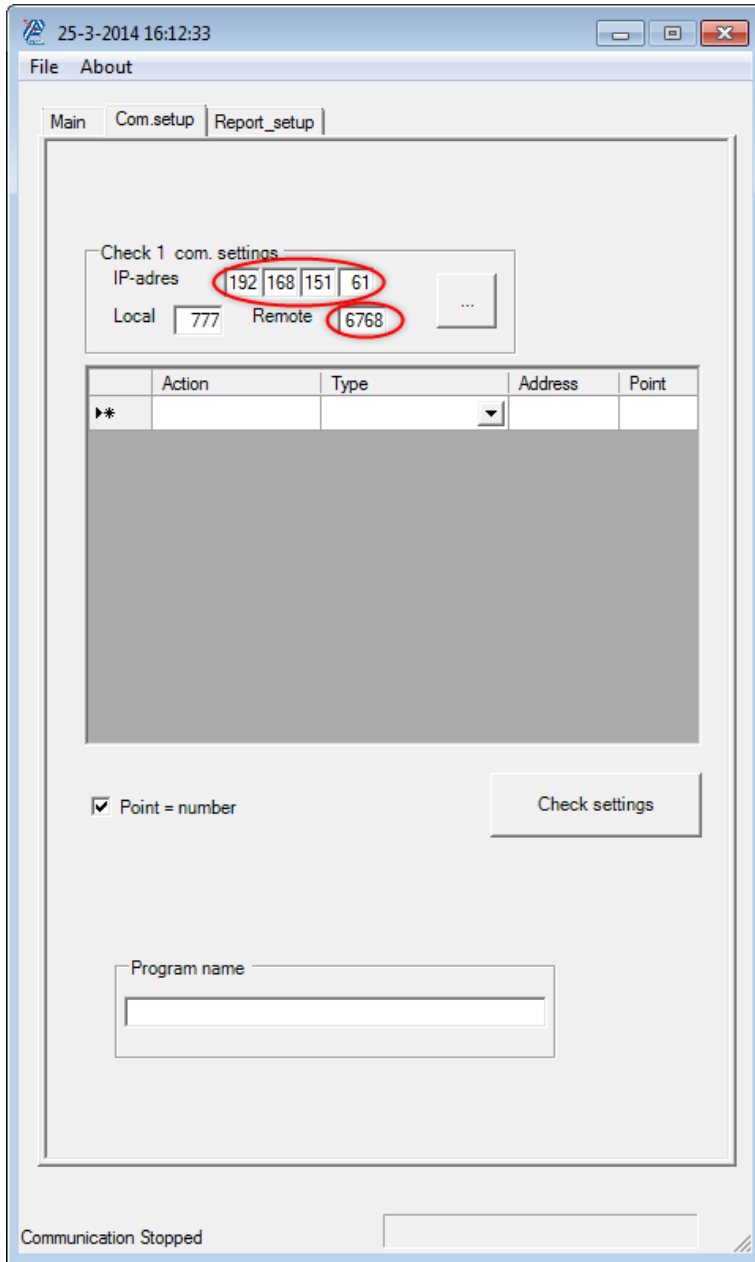
The screenshot shows the 'Ethernet Setup' screen with the following fields and values:


Field	Value	Action
Port	6768	EDIT
Buslink Address	Off	Adjust (minus/plus)
Buslink Subaddr	0	Adjust (minus/plus) and EDIT

Navigation buttons at the bottom: Cancel (red X), Prev (blue <<), and Ok (green checkmark).

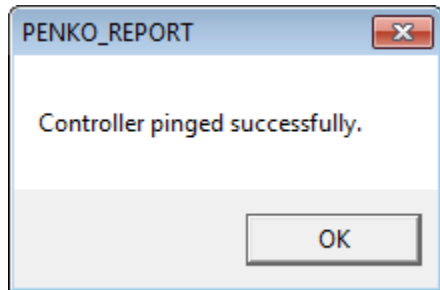
PENKO How to...
Install and set up PENKO Data Reporter

Click on the tab **Com.setup** and set the IP address and Remote port (same as the FLEX).

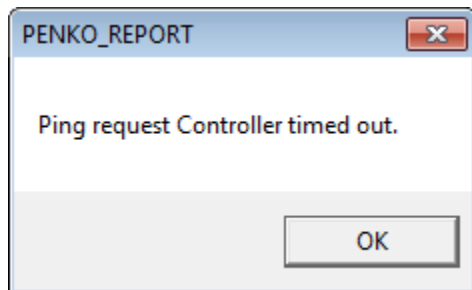


Click on  to ping to the FLEX. If the FLEX is responding you will get the following message:

PENKO How to...
Install and set up PENKO Data Reporter



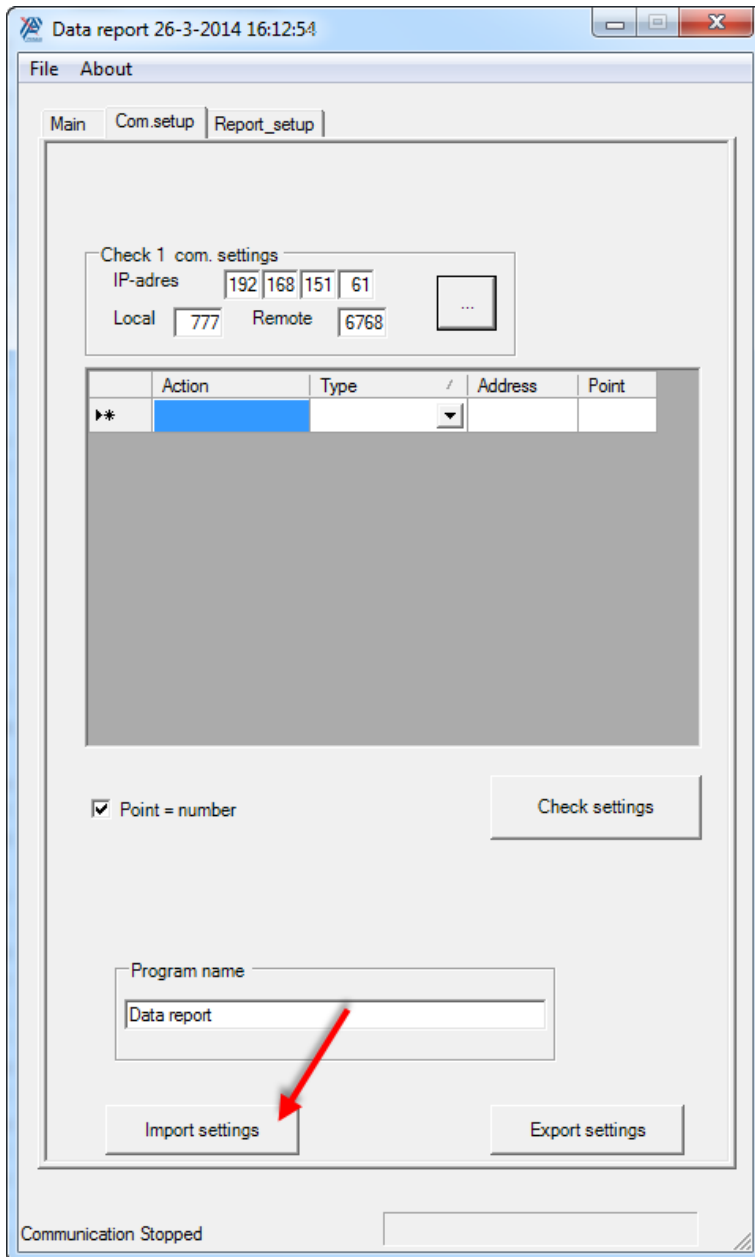
If something is wrong with the communication you will get the following message:



If you get this message, check if the PC and the FLEX are set in the same range.

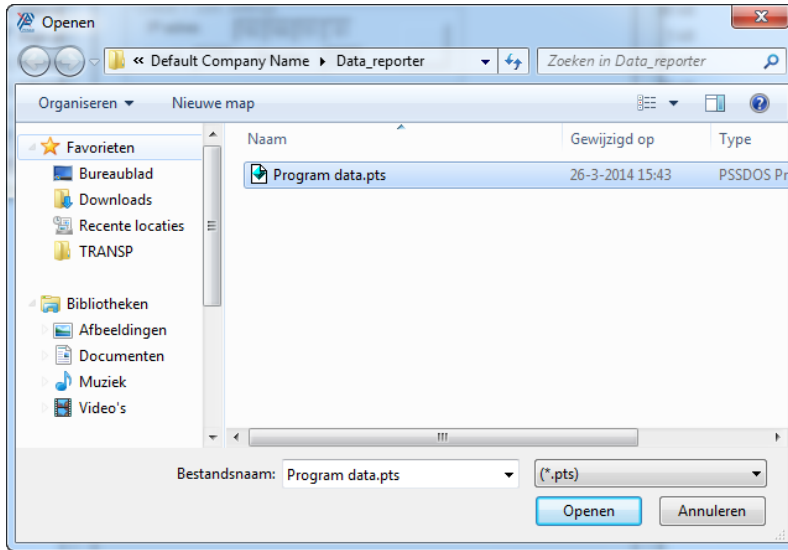
Import settings (PST file)

To import the communication port and program settings click on **Import settings**.

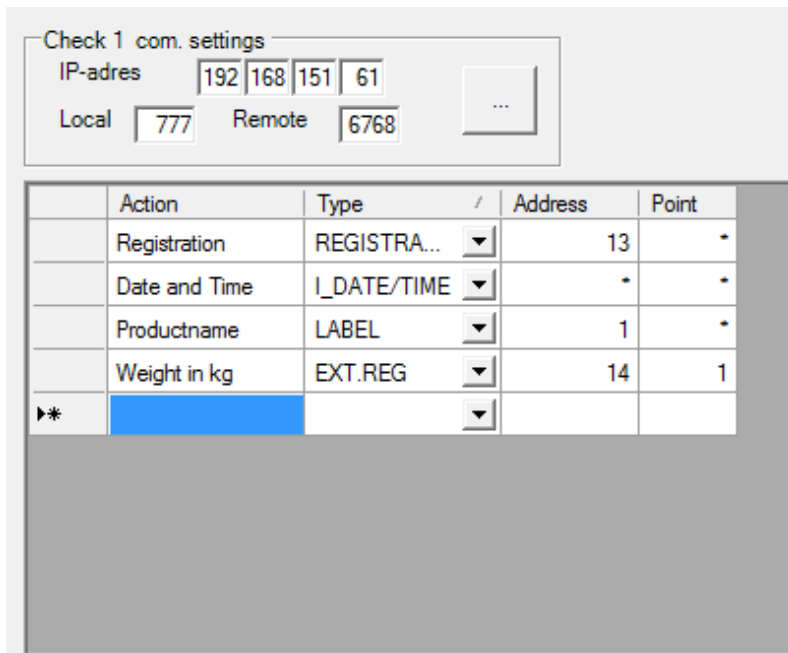


PENKO How to...
Install and set up PENKO Data Reporter

Go to the folder where the PTS file is located. Select the file and click **Open**.

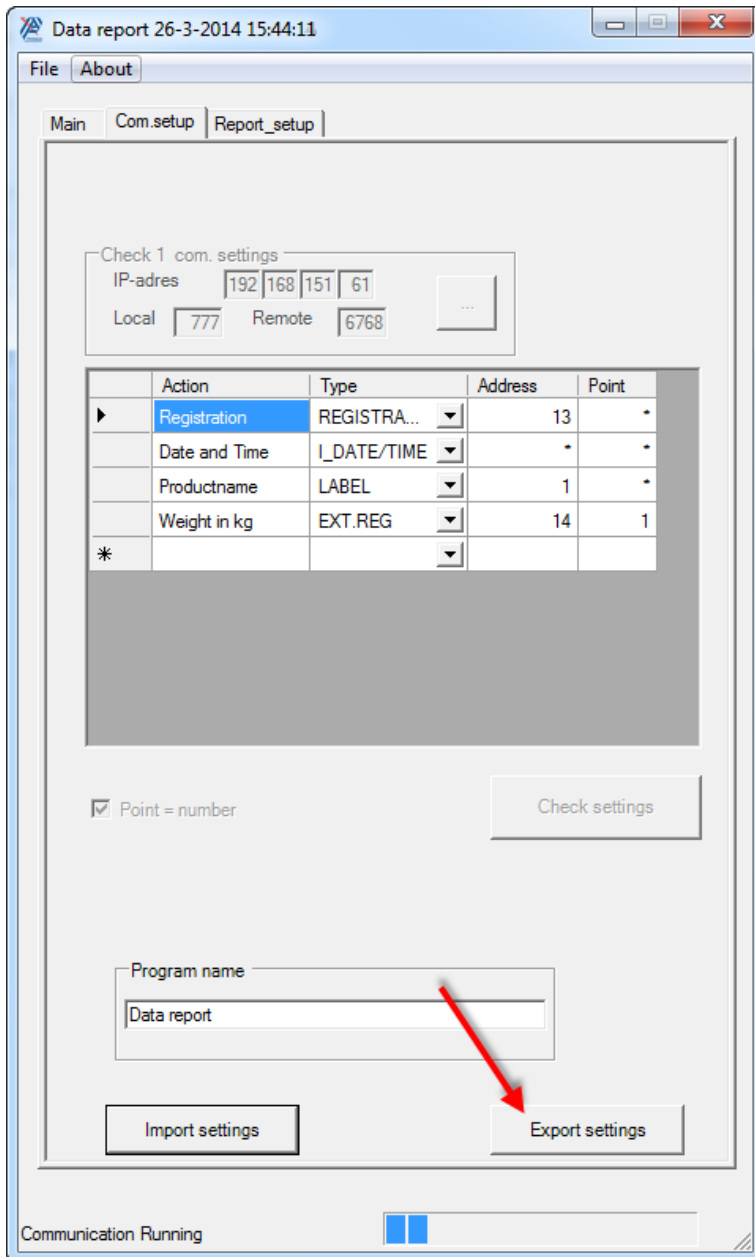


The settings are now loaded.



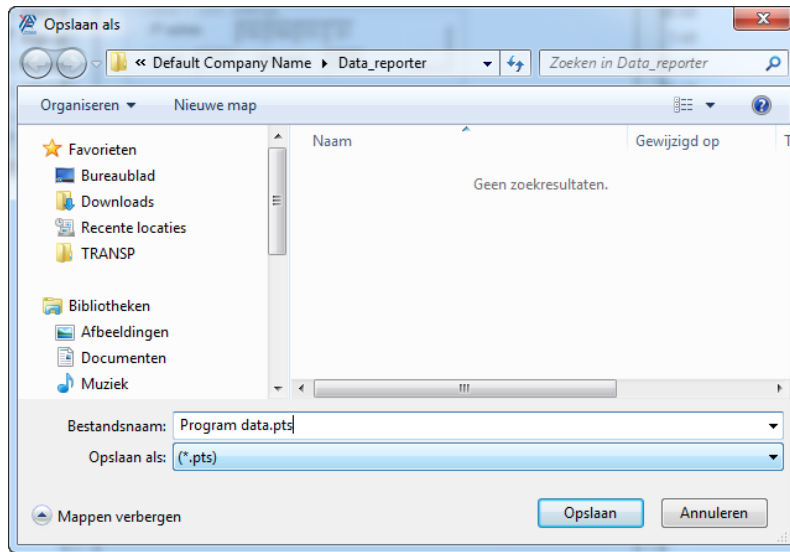
Export Settings (PST file)

To export the communication port and program settings click on **Export settings**.



PENKO How to...
Install and set up PENKO Data Reporter

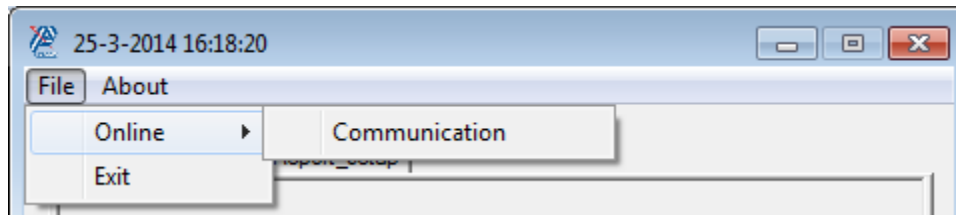
Go to the folder where you want to save the PTS file. Give the file a name and click **Save**.



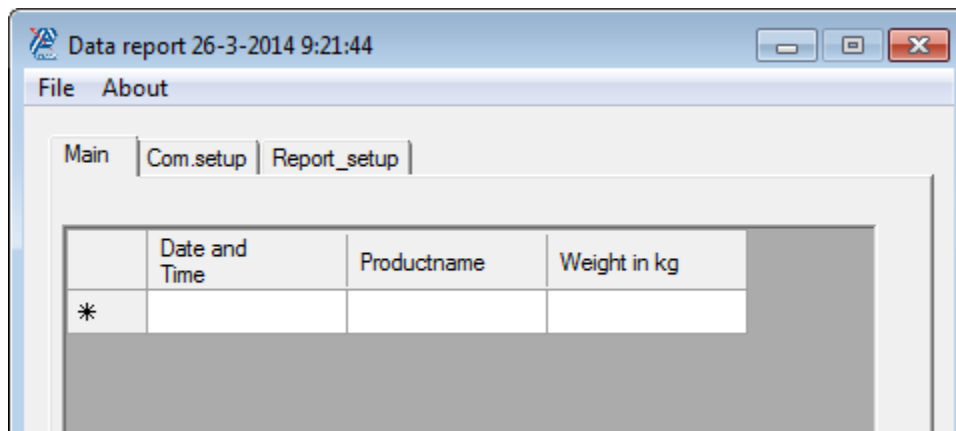
The settings are now saved.

Start communication

Go to **File** → **Online** and click on **Communication**



Click on the tab **Main**.



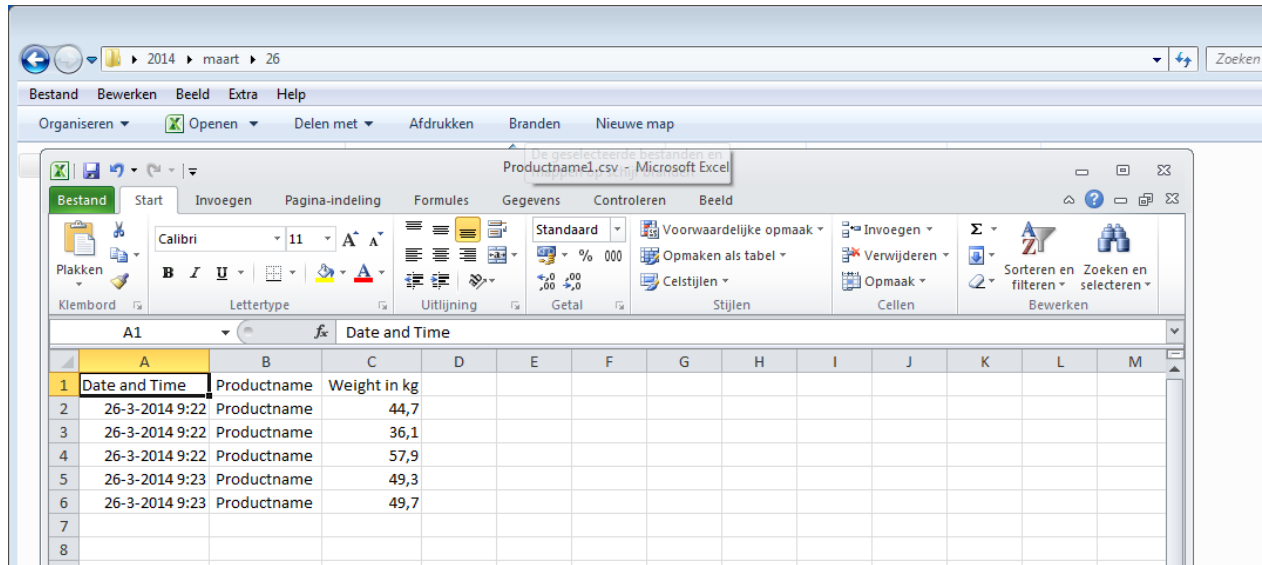
Start dosing and the data will show in the window.

PENKO How to...
Install and set up PENKO Data Reporter

	Date and Time	Productname	Weight in kg
▶	26-3-2014 9:22:51	Productname	44,7
	26-3-2014 9:22:55	Productname	36,1
	26-3-2014 9:22:59	Productname	57,9
	26-3-2014 9:23:03	Productname	49,3
	26-3-2014 9:23:09	Productname	49,7
*			

The data is saved in a CSV file as below.

PENKO How to... Install and set up PENKO Data Reporter





About PENKO

Our design expertise include systems for manufacturing plants, bulk weighing, check weighing, force measuring and process control. For over 35 years, PENKO Engineering B.V. has been at the forefront of development and production of high-accuracy, high-speed weighing systems and our solutions continue to help cut costs, increase ROI and drive profits for some of the largest global brands, such as Cargill, Sara Lee, Heinz, Kraft Foods and Unilever to name but a few.

Whether you are looking for a simple stand-alone weighing system or a high-speed weighing and dosing controller for a complex automated production line, PENKO has a comprehensive range of standard solutions you can rely on.

Certifications

PENKO sets high standards for its products and product performance which are tested, certified and approved by independent expert and government organizations to ensure they meet – and even – exceed metrology industry guidelines. A library of testing certificates is available for reference on:

http://penko.com/nl/publications_certificates.html



PENKO Professional Services

PENKO is committed to ensuring every system is installed, tested, programmed, commissioned and operational to client specifications. Our engineers, at our weighing center in Ede, Netherlands, as well as our distributors around the world, strive to solve most weighing-system issues within the same day. On a monthly basis PENKO offers free training classes to anyone interested in exploring modern, high-speed weighing instruments and solutions. A schedule of training sessions is found on: www.penko.com/training

PENKO Alliances

PENKO's worldwide network: Australia, Belgium, Brazil, China, Denmark, Germany, Egypt, Finland, France, India, Italy, Netherlands, Norway, Poland, Portugal, Slovakia, Spain, Syria, Turkey, United Kingdom, South Africa, Slovakia Sweden, Switzerland and Singapore. A complete overview you will find on: www.penko.com/dealers

