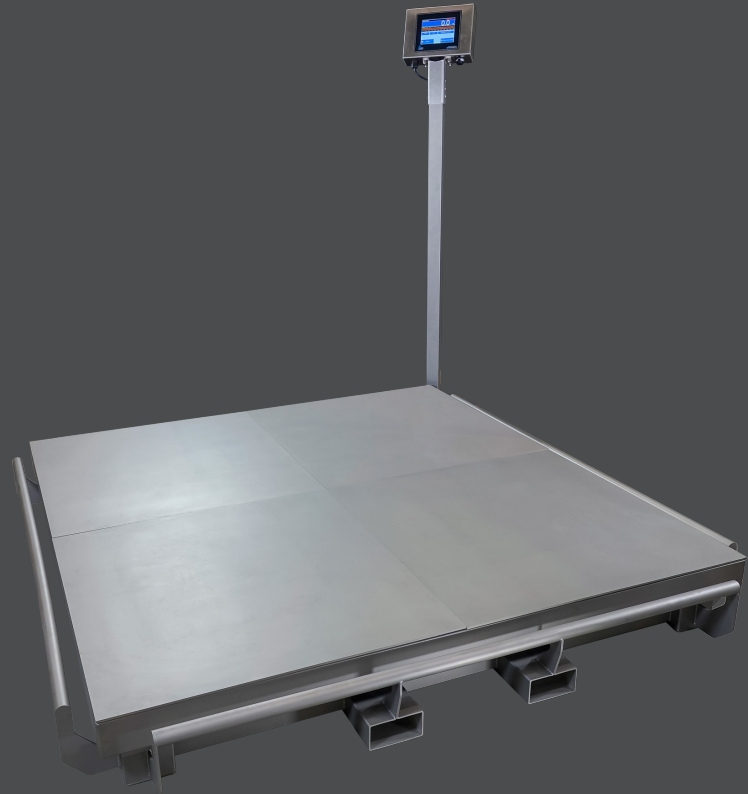


Floor scale

A PENKO-designed industrial scale range for heavy duty environments



FEATURES

- ✓ Heavy duty 4 load cell platform
- ✓ Sturdy design for stable weighing signal
- ✓ Capacities for 600 kg up to 2000 kg.
- ✓ Sizes 1000 x 1000 mm and 1500 x 1500 mm.
- ✓ Fully stainless steel
- ✓ Overload protection at the corners of the platform
- ✓ Easier access to load cells by special top plate design

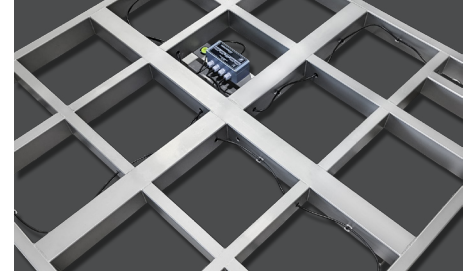
A fully PENKO designed industrial scale range for heavy duty environments. The scales are manufactured from stainless steel, type 304. They contain stainless steel load cells with an IP rating of 68/69K. Both the load cells and the electronics used are OIML certified.

BENEFITS

Stiffness

The stiffness of the frame is ensured by the thickness and design of the stainless steel frame and top plate. PENKO's well placed box profile structure, thoroughly tested by FEA simulation as

well as with actual weights, prevents the frame from bending under full load. For both the 1000 x 1000 mm and the 1500 x 1500 mm, the top plate has a thickness of 5 mm



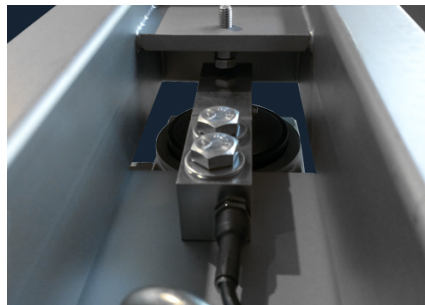
Leveling

Weighing scales perform best on even surfaces. Most floors are slightly uneven. To compensate for that, our scales can be leveled out with height adjustable feet that are incorporated

in the design as a standard. It allows for a height adjustment of 10 mm. To easily check if the platform is leveled out, a bulls-eye is attached to the frame.

Overload protection

PENKO's scales offer load cell overload protection which is included at all four corners of the scale. This prevents the development of unwanted shear forces on the load cells, extending the load cell's life expectancy.



Non-matching load cell output

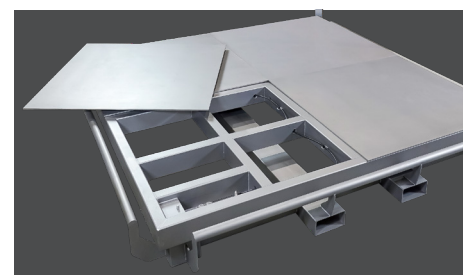
All manufactured load cells have their own mV/V output. When multiple load cells are used in one platform, it is possible that the difference in outputs create too much weight deviation within the platform itself,

resulting in a poorly performing weighing scale. To enhance the scales performance in such a case, a PENKO designed junction box with individual load cell trimming options is included as a standard.

Top plate design

For easy access to the load cell and safety reasons, our scales' top plate has been divided into 4 pieces. Each piece has manageable dimensions and can be lifted by one person. PENKO's design

makes checking, adjusting and replacing a load cell - as well as cleaning underneath the platform - much easier to execute.





Benefits of PENKO design

Our designs are based on the experience and expertise which we have built over our 45+ years of existence. It resulted in a scale range with the following features:

- ✓ Leveling possibility for adjustment to uneven floors
- ✓ Adjustment option for non-matching load cell outputs
- ✓ Load cells overload protection
- ✓ Special top plate design for safety and easier access to the load cells
- ✓ An accessories range focused on enhancing the user experience
- ✓ A stiff frame
- ✓ An accessories range focused on enhancing the user experience



ACCESSORIES



- ✓ A stainless steel stand with integrated control panel

- ✓ A stainless steel ramp.

The width of the ramp is equal to the width of the platform. It has a length of 1100 mm at an angle of 5.7°.

- ✓ A strong forklift subframe, ensuring easy lifting of the platform without damaging the scale's wiring.

This frame is 85 mm height. The fork channels have a width of 120 mm and the centre to centre distance between the channels is 370 mm (common distance of a pallet/pump truck).

Model	Sizes	Load cell type	Loadcell capacity	Weighing capacity	Accuracy
Floor	1000 x 1000 x 115 mm	4 x 3510 T-end	500 kg	600 kg	200 g
Floor	1000 x 1000 x 115 mm	4 x 3510 T-end	1000 kg	1500 kg	500 g
Floor	1500 x 1500 x 115 mm	4 x 3510 T-end	500 kg	600 kg	200 g
Floor	1500 x 1500 x 115 mm	4 x 3510 T-end	1000 kg	1500 kg	500 g
Floor	1500 x 1500 x 115 mm	4 x 3510 T-end	2000 kg	2000 kg	1 kg

