



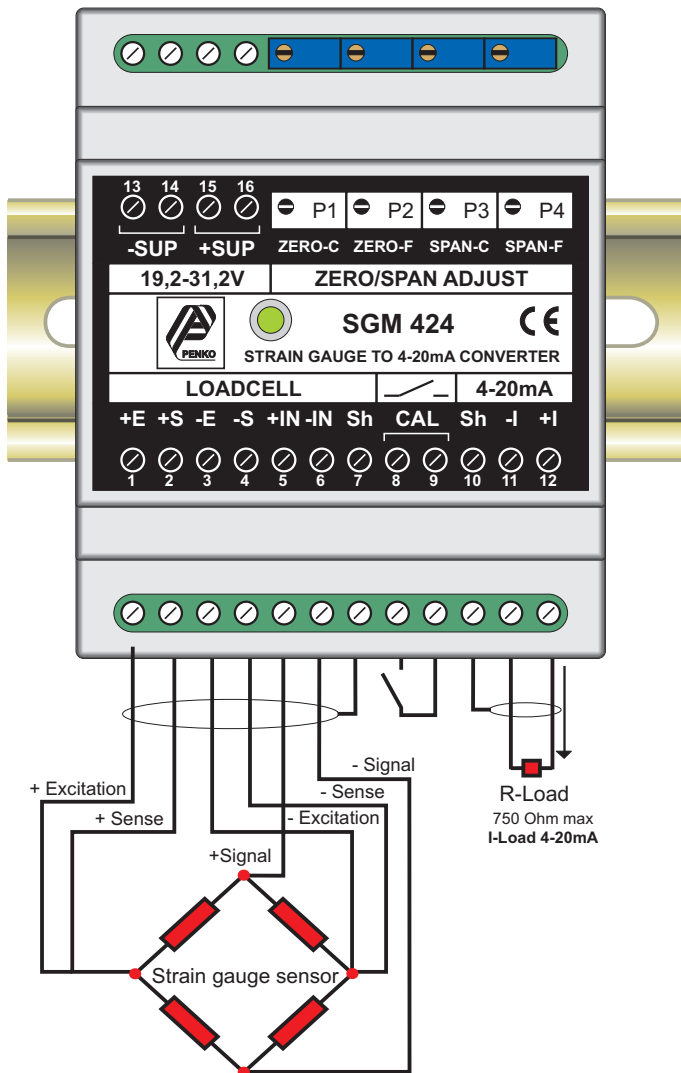
STRAIN GAUGE TO 4-20 mA CONVERTER SGM424

- Strain gauge input 0-20mV
- 4-20 mA source output two wire system
- Wide power supply range 24Vdc (-20% to +30%)
- PLC compatible
- 12 bits linearity
- Zero and span adjustable by 25 turns potentiometer
- Suitable for up to 8 loadcells
- Rail-mounting (EN 50.022-35x7.7)
- Industrial ABS Module housing
- High efficiency
- Calibration input

Product info

connections:

actual size



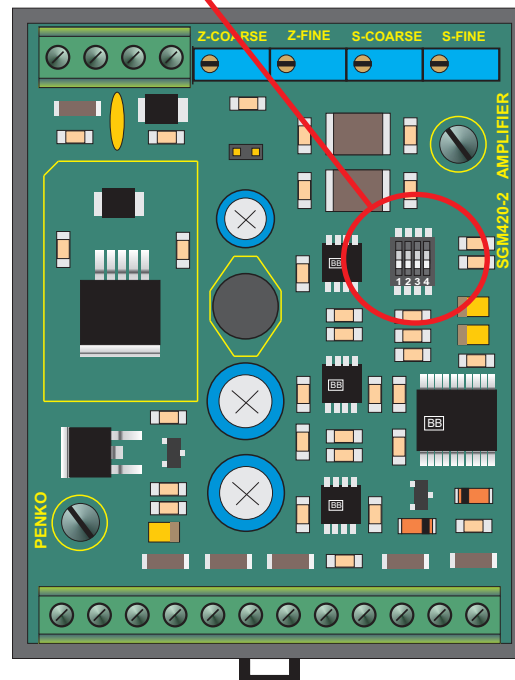
SPAN

DIP1 & 2 = OFF = GAIN = 800x
 DIP1 = ON = GAIN = 1200x
 DIP1 & 2 = ON = GAIN = 2000x



LOWPASS FILTER

DIP3 & 4 = OFF = 2,5Hz
 DIP3 & 4 = ON = 25Hz



Specifications:

Power supply:	24 Vdc (19,2V - 31,2V max.)
Bridge excitation:	10 Vdc.
Number of loadcells:	1-4 loadcells of 350 Ohm or 1-8 loadcells of 1kOhm.
Signal input range:	0-20 mV.
Safe input voltage:	0-18 V.
Output:	4-20 mA .
Input Impedance:	10 Gohm.
Linearity:	0.02%, 12 bits.
Temperature effects:	on zero 0.005%/deg.C, on span 0.0025%/deg.C of FS. (gain=800)
Analog filter	2.5Hz or 25Hz. (2.5Hz standard, 25Hz selectable inside).
Tarra range:	up to 75% (2mV/V loadcells).
Span range:	10% to 100% (2mV/V loadcells).
Calibration input:	potential free contact.
Consumption:	3,5 Watt (4 loadcells of 350 Ohm).
Dimensions:	70 x 85 x 60 mm.
Weight:	200g.
Case:	DIN case acc. IEC 529/DIN VDE 0470-1,ABS plastic.

Galvanic isolation from the power supply optional.
 other input ranges or filter frequencies on request.

Technical improvements may cause the specifications to change.



Amplifier SGM424

