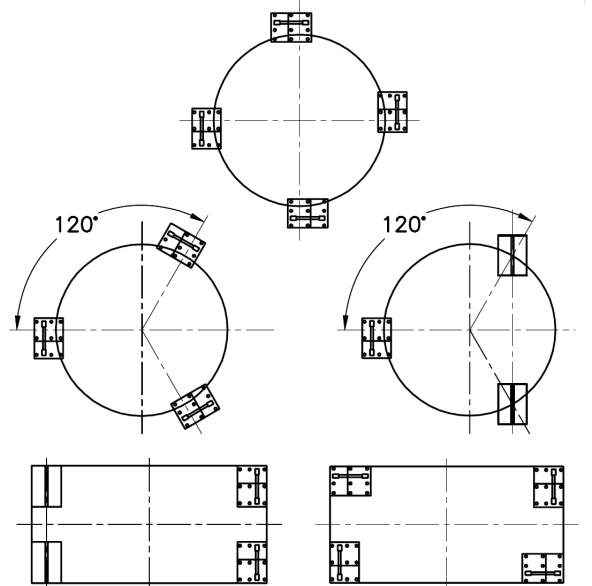
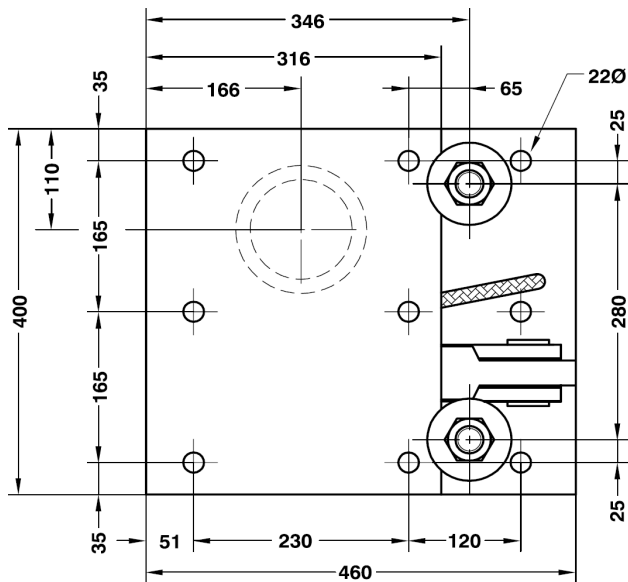
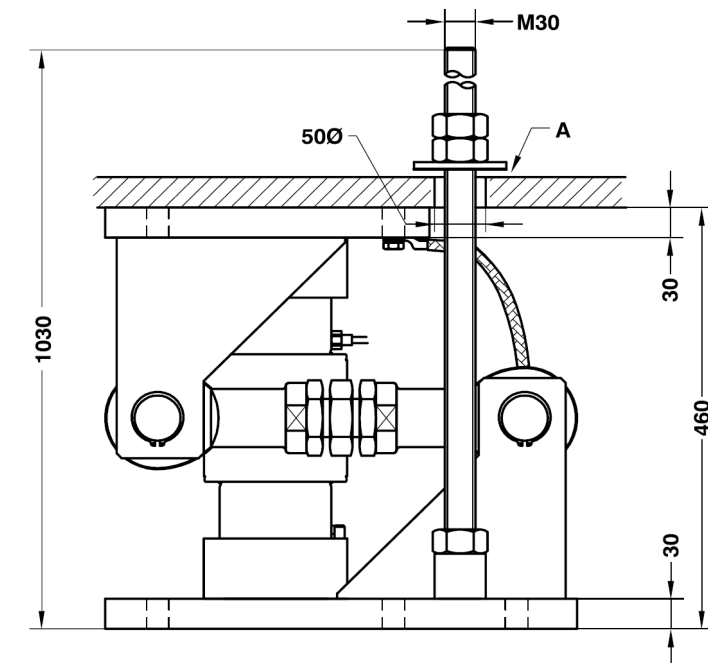


MOUNTING KIT LIFT-OFF PREVENTION FOR SILO FOR M.740 (400t)
LASTECKE MIT ABHEBESICHERUNG FÜR M.740 (400t)



| | | |
|---|--------|--|
| Nominal load | 400 t | <i>Nennlast</i> |
| Max. permissible side offset transverse to retention arm | ±5 mm | <i>Max. zulässige Seitenverschiebung zur Lenkerrichtung</i> |
| Permissible horitz. force in direction of the retention arm | 240 kN | <i>Max. zulässige Horizontalkraft zur Lenkerrichtung</i> |
| Maximum permissible lifting force | 330 kN | <i>Max. zulässige Zugkraft vertikal</i> |
| Max. permissible lifting movement, must be adjusted (A) | 3 mm | <i>Max. zulässiger Nennweg vertikal, muss eingestellt werden (A)</i> |
| Material: Alloy Steel zinc-plated | | <i>Material: Verzinkter Stahl</i> |

Dimensions in mm. *Abmessungen in mm.*

Transport weight - *Transportgewicht*: 142 kg

PENKO Engineering B.V. | Schutterweg 35, 6718 XC Ede | The Netherlands | Tel 0031 (0)318 525630 | Fax 0031 (0)318 529715
info@penko.com | www.penko.com

All product information and specifications are subject to change without prior notice. Copyright © 2011 PENKO. All Rights Reserved.
7600L1026 Updated 06/18