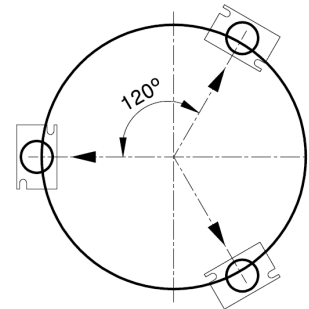
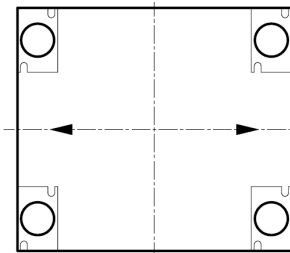
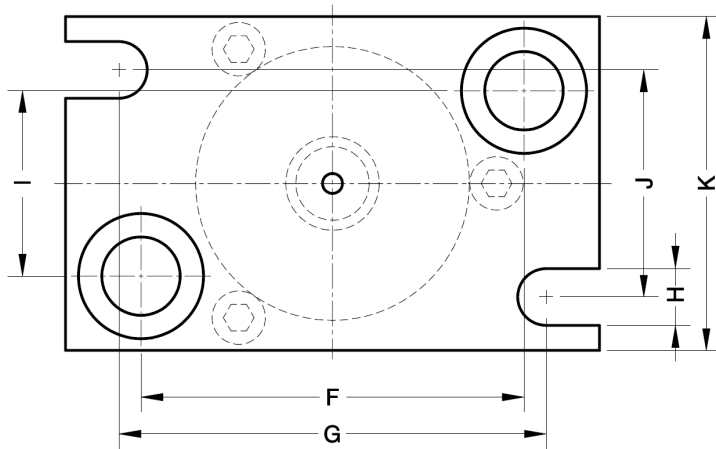
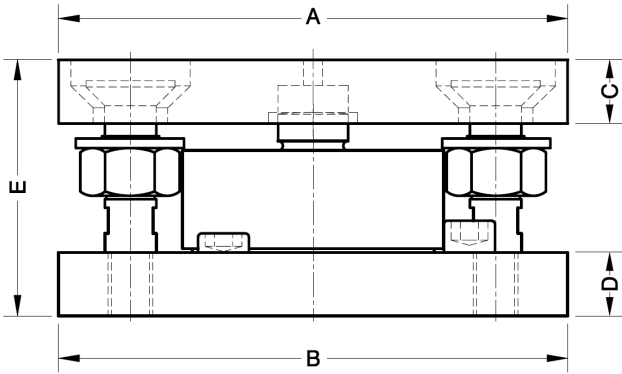


# 42901-2

MOUNTING KIT LIFT-OFF PREVENTION FOR SILO FOR MOD.420  
LASTECKE MIT ABHEBESICHERUNG FÜR MOD.420



Accessory Zubehör	Nominal Load Nennlast	A	B	C	D	E	F	G	H	I	J	K	Transport weight Transportgewicht
<b>42901</b>	2.5-5-10 t	160	160	20	20	80	115	128	17	55.5	68	100	5.3 kg
<b>42902</b>	20-30 t	218	218	25	25	100	168	180	21	100	100	150	13.5 kg

Acc. Material: Alloy Steel zinc-plated	<b>42901</b>	<b>42902</b>	Zub. Material: Verzinkter Stahl
Acc. Material: Stainless Steel	<b>42901i</b>	<b>42902i</b>	Zub. Material: Edelstahl
Nominal load	2.5-5-10 t	20-30 t	Nennlast
Max. permissible side offset transverse load cell	±3 mm	±3 mm	Max. zulässige Seitenverschiebung
Maximum permissible lifting force	72 kN	124 kN	Max. zulässige Zugkraft vertikal
Maximum permissible lateral force	22 kN	32 kN	Max. zulässige Seitenkraft

Dimensiones en mm. *Dimensions in mm.*