



# PENKO Engineering BV

The Leading Experts In Weighing & Dosing

2kg-5kg

# 1006

## Aluminum Single-Point Load Cell

### FEATURES

- Capacities 2–5 kg
- Aluminum construction
- Single-point 200 x 200 mm platform
- IP66 protection

### APPLICATIONS

- Bench scales
- Counting scales
- Grocery scales

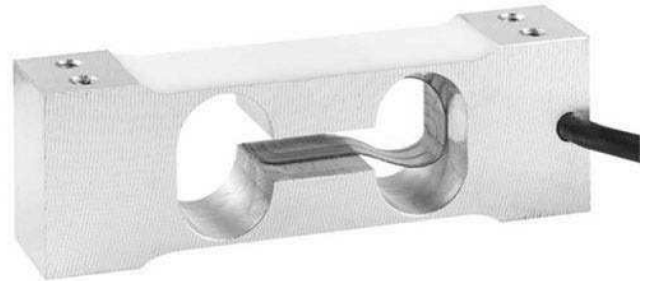
### DESCRIPTION

Model 1006 is a very low capacity, high precision single-point load cell designed for direct mounting in low capacity scales.

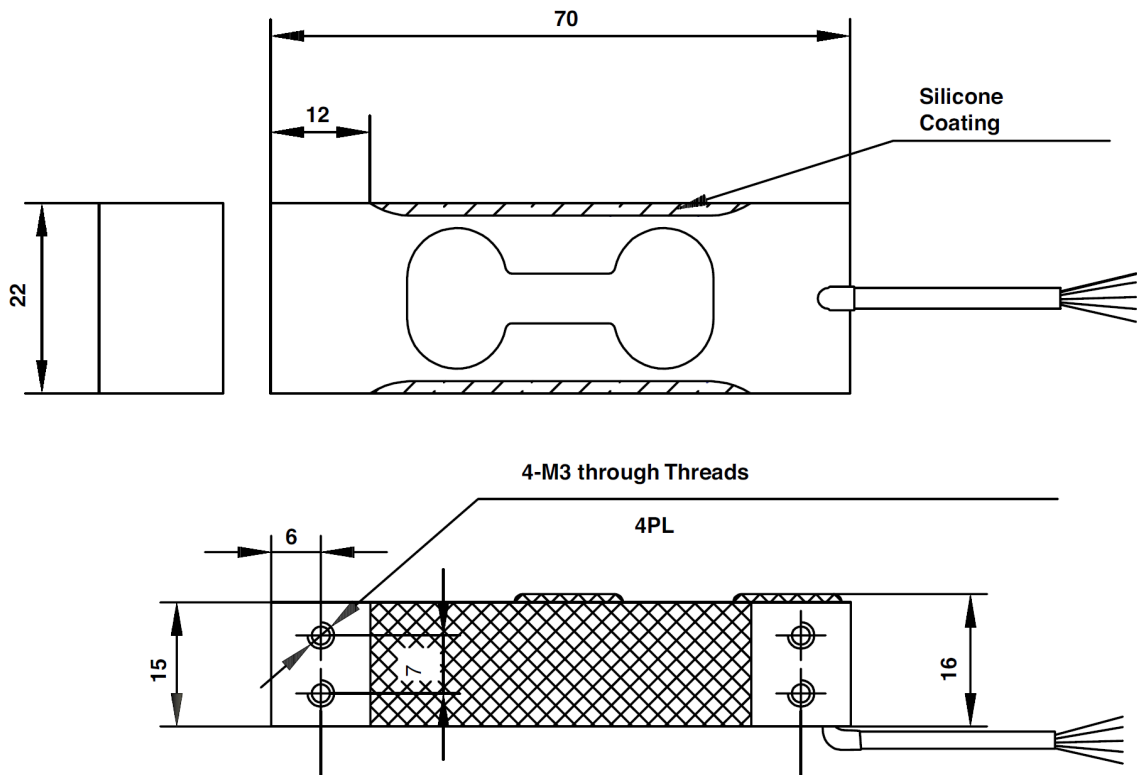
This load cell is suitable for applications including postal scales, counting scales, general-purpose weighing scales and is also suitable for a wide variety of force

measurement applications, such as industrial process control or specialist medical devices.

Model 1006 offers very high performance from a very small size. It is very easy to use, and easy to apply in a wide variety of applications, where the acting center of force application is within 100 mm of the load cell vertical axis.



### OUTLINE DIMENSIONS in millimeters



| SPECIFICATIONS                            |                                     |        |                       |
|---|-------------------------------------|--------|-----------------------|
| PARAMETER                                 | VALUE                               |        | UNIT                  |
| Accuracy class                            | Non-Approved                        | G      |                       |
| Maximum no. of intervals (n)              | 1000                                | 3000   |                       |
| Rated capacity – R.C. (E <sub>max</sub> ) | 2, 3, 5                             |        | kg                    |
| Rated output – R.O.                       | 2.0                                 |        | mV/V                  |
| Rated output tolerance                    | 0.2                                 |        | ±mV/V                 |
| Zero balance                              | 0.2                                 |        | ±mV/V                 |
| Zero return, 30 min.                      | 0.050                               | 0.0170 | ±% of applied load    |
| Total error                               | 0.0300                              | 0.0200 | ±% of rated output    |
| Temperature effect on zero                | 0.0100                              | 0.0040 | ±% of rated output/°C |
| Temperature effect on output              | 0.0030                              | 0.0010 | ±% of load/°C         |
| Eccentric loading error                   | 0.0085                              | 0.0057 | ±% of rated load/cm   |
| Temp. range, compensated                  | -10 to +40                          |        | °C                    |
| Temp. range, safe                         | -20 to +70                          |        | °C                    |
| Maximum safe central overload             | 150                                 |        | % of R.C.             |
| Ultimate central overload                 | 300                                 |        | % of R.C.             |
| Excitation, recommended                   | 10                                  |        | VDC or VAC RMS        |
| Excitation, maximum                       | 15                                  |        | VDC or VAC RMS        |
| Input impedance                           | 415±20                              |        | Ω                     |
| Output impedance                          | 350±3                               |        | Ω                     |
| Insulation resistance                     | >2000                               |        | MΩ                    |
| Cable length                              | 0.4                                 |        | m                     |
| Cable type                                | 4 wire, PVC, single floating screen |        | Standard              |
| Construction                              | Aluminum                            |        |                       |
| Environmental protection                  | IP66                                |        |                       |
| Platform size (max)                       | 200 x 200                           |        | mm                    |
| Recommended torque                        | 2 and 3 kg: 4.0    5 kg: 6.0        |        | N*m                   |

All specifications subject to change without notice.

### Wiring Schematic Diagram (Unbalanced bridge configuration)

