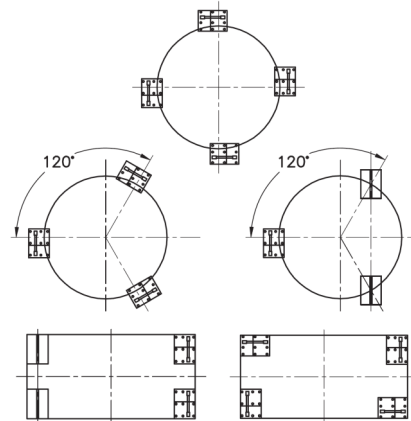
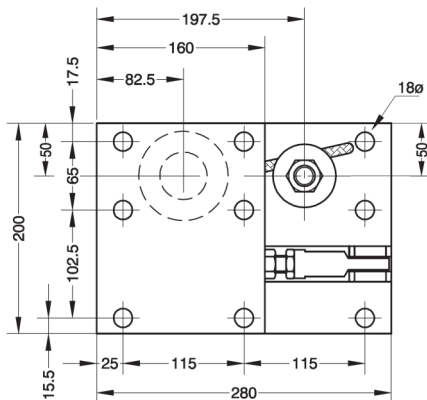
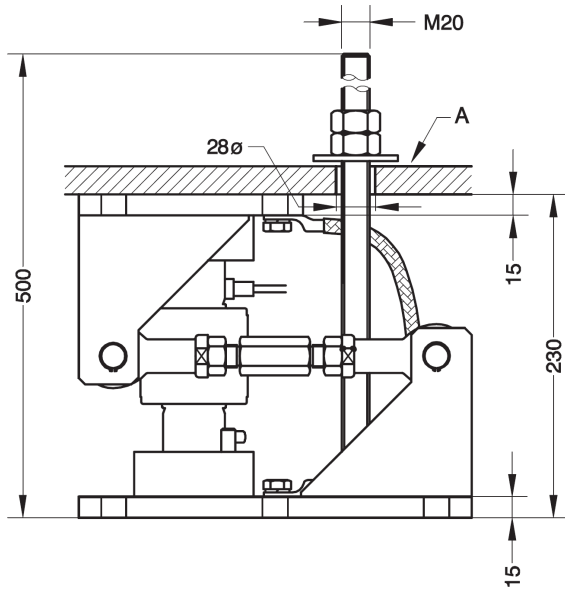


MOUNTING KIT LIFT-OFF PREVENTION FOR SILO FOR M.740 (15...40t)
LASTECKE MIT ABHEBESICHERUNG FÜR M.740 (15...40t)

74907



Nominal load	15...40 t	<i>Nennlast</i>
Max. permissible side offset transverse to retention arm	±4 mm	<i>Max. zulässige Seitenverschiebung zur Lenkerrichtung</i>
Permissible horitz. force in direction of the retention arm	47 kN	<i>Max. zulässige Horizontalkraft zur Lenkerrichtung</i>
Maximum permissible lifting force	76 kN	<i>Max. zulässige Zugkraft vertikal</i>
Max. permissible lifting movement, must be adjusted (A)	3 mm	<i>Max. zulässiger Nennweg vertikal, muss eingestellt werden (A)</i>
Material: Steel alloy zinc-plated		<i>Material: Verzinkter Stahl</i>

Dimensions in mm. *Abmessungen in mm.*

Transport weight - *Transportgewicht*: 19 kg